



*Waikiki Improvement Association*

# Waikiki Wiki Wiki Wire

Volume XI, No. 50

December 16-22, 2010

## Outrigger announces eight new stores as shoppers fill their holiday bags

*New tenants at Outrigger Reef on the Beach and Outrigger Waikiki on the Beach provide additional venues for shoppers this season*

It's easy to play Santa in Waikiki this season, thanks to eight exciting stores that have opened or will open this month inside the Outrigger Reef on the Beach and Outrigger Waikiki on the Beach hotels just in time for the holidays. From local favorites, to newcomers on the island shopping scene, these fresh shops bring a heightened variety and flare to Waikiki. The eight stores include: Freaky Tiki Tropical Optical, Little People Hawaii, Martin & MacArthur, My Vacation Portraits, Na Hoku, Pele's Signature, Skye's Koa & Ukulele and The Waikiki Christmas Store.

"We invite visiting and isle shoppers alike to come down and check out the diverse, island-inspired items that are sure to spread aloha under every tree," said Barbara Campbell, vice president, retail development and leasing for Outrigger Enterprises Group. "Whether you're in need of unique items to decorate the tree, getting presents for keiki or looking for a distinctive gift to treat that extra-special someone, these new Outrigger property shops have your gift-giving covered."

### New At Outrigger Reef on the Beach

**Martin & MacArthur:** Hawai'i's premier Koa furniture-maker has made a new home at Outrigger Reef. The store features gracious accessories and gifts, including an exclusive line of hardwood watches from over 200 local, award-winning craftsmen. Martin & MacArthur also stocks organic skincare and fragrance items from local providers including Mailie Organics and Ali'i Kula Lavender, perfect for de-stressing skin after a long day of shopping.

**Skye's Koa & Ukulele:** The new Skye's Koa & Ukulele at Outrigger Reef will give visitors the opportunity to touch and hear the sounds of the islands. Those in the market to give the gift of music will want to make a stop to select a finely-tuned ukulele, Hawai'i's most iconic instrument.

**The Waikiki Christmas Store:** Shoppers looking to incorporate a Hawaiian Christmas into their home will want to check out The Waikiki Christmas Store at Outrigger Reef. Offering hundreds of Hawaiian and traditional ornaments, this local company was established in 1985 and is delighting residents and visitors alike with its resin,

Continued on next page

### Inside this issue:

WCC offers classes	2	Rumfire and the edge of Waikiki will host a celebration on New Year's Eve	7
Forever 21® opens at Royal Hawaiian Center	3	Hyatt Waikiki for the Holidays	8
Hawaii Prince Hotel Waikiki - New Year Celebrations	3	<i>Party with the Stars</i> at Hilton Hawaiian Village on New Year's Eve	9
Hawai'i Convention Center recognized by Business Traveler magazine	5	Paint the town pink on New Year's Eve at the Royal Hawaiian	10
Star offers complete whale watch experience, including whale guarantee and "child free!"	5	Waikiki Hula Show at the Kūhiō Beach Hula Mund	10
Tis the season to celebrate the holidays at The Moana Surfrider	6	Attachments (9)	

... and MORE

Continued from front page

glass, wood and clay creations. Each ornament can be hand-personalized in minutes – free of charge – for an extra special island accent for the holidays.

### New At Outrigger Waikiki on the Beach

**Freaky Tiki Tropical Optical:** Eyebrows will be raised at Outrigger Waikiki, as shoppers stock up on shades in the latest styles and trends. The oasis of luxury eyewear at Freaky Tiki Tropical Optical includes Maui Jim, Oakley, Von Zipper, Prada, Versace, Ray Ban and more.

**Na Hoku:** Hawaii's finest jeweler since 1924 graces Outrigger Waikiki shoppers with its tradition and original jewelry collections. From Hawaiian slippers to palm tress and tropical flowers, each piece is a celebration of the islands. These original creations of Na Hoku Hawaiian and Island Lifestyle jewelry are made to accent the taste and style of the wearer with exotic, tropical and elegant design.

**Pele's Signature:** Shoppers will be writing home about Pele's Signature at Outrigger Waikiki and its uniquely designed and handcrafted pens made from local and exotic woods. Husband-and-wife-team Geoff and Crystal Amezcua pride themselves in putting "aloha" into each pen – fashioned locally in Hawaii – in a variety of styles including roller ball, ball point and fountain pens.

**Little People Hawaii:** This is a one-stop shop for keiki Hawaiian collectable dolls, children's aloha shirts and dresses, Hawaiian baby items and unique Hawaiian children's books. Bearfoot bears as ambassadors of aloha or vibrant island-wear will have children in the islands and across the globe lighting up with glee.

Also – guests staying at Outrigger Reef on the Beach or Outrigger Waikiki on the Beach can now receive a complimentary photo session (retail rate \$175) through My Vacation Portraits - an energetic and professional photography company that specializes in vacation portraits and weddings. During the session, the photographer will take 50 – 75 shots, of which the guest receive a free eight by 10 sized-picture to take home as a memento. Several packages and options are then available for purchase, should the recipient want more images. The photos are forwarded to a processing lab, where they are digitally retouched, so guests look their absolute best while on their Hawaiian vacation.

For more information about these stores, please visit: [www.outriggerreef.com](http://www.outriggerreef.com) or [www.outriggerwaikiki.com](http://www.outriggerwaikiki.com).

## Belly class at WCC

End 2010 and start the New year with Masayo Loyd teaches contemporary and modern Egyptian techniques with Zill (finger cymbals) and veil. Each class will focus on learning isolation and separation of simple to complex movements and combinations; as well as layering movements while playing finger cymbals. Learn proper posture and execution of movements to prevent injuries. Added classes:

Belly Class, every Saturday, 11:30-1:00 p.m.  
Single Fee Members: \$7, Guest's \$14

December 18  
January 8, 15, 22, 29

Wear comfortable workout clothes, dance with bare feet or with dance sandals (soft sole dance shoes). Bring water, towel and a smile! This class is open to all levels and not restricted to any body types. For more information call 923-1802 or visit our web site at: [www.waikikicommunitycenter.org](http://www.waikikicommunitycenter.org). This is an ongoing class each Saturday(1 hr. 30 min.).

## Bridge with Dave returns to WCC!

On Wednesdays at Waikiki Community Center (WCC) join Dave Campbell in having fun playing bridge and learn at the same time.

It all happens from 12:30-4:30 p.m.

Some reviews but *no formal lessons!* Questions are encouraged before, during and after the playing.

Sorry, this activity is not for beginners. Classes are held each Wednesday in room #203A (bldg. A – upstairs).

The cost is \$2/\$4.  
WCC is located at 310 Paoakalani Ave.

For more information please call 923-1802.  
Complimentary parking is available for students.

Please visit our web site at:  
[www.waikikicommunitycenter.org](http://www.waikikicommunitycenter.org)

---

## Forever 21® opens at Royal Hawaiian Center December 26

Forever 21, the high-profile specialty retailer of women's, men's and children's clothing and accessories, will unveil its new 42,520 square-foot store at the Royal Hawaiian Center with a soft opening Sunday, December 19, followed a week later by a grand opening with specials and giveaways on December 26 starting at 10 am. The tri-level, Flagship store is located near Cheesecake Factory in Building C, on the Diamond Head end of the Center.

Grand opening festivities on December 26 include Forever 21 gift card giveaways (400 gift cards), special 10% off \$40 or more discounts (with flyer or email) and free lockets with \$40 purchase while supplies last. There will also be a DJ spinning music, Forever 21 fashion stylists available for appointments and a raffle drawing.

"The impending opening is generating a lot of excitement and anticipation," said Rosalind Schurgin, CEO of The Festival Companies, property manager and developer for Royal Hawaiian Center. "Forever 21 will bring to Waikiki the best assortment of fashion at a great value. Their variety and daily introduction of fresh merchandise appeal to both kamaaina and visitors alike who will be able to shop all the latest trends in an exciting shopping environment. We are delighted to have them join our collection of more than 100 retailers and restaurants."

Forever 21 has successfully opened several stores in Hawaii where customers have enthusiastically welcomed the daily fashion arrivals and great value. Forever 21 Executive Vice President Larry Meyer said, "We are pleased to be opening the largest Forever 21 location in Hawaii. Royal Hawaiian Center is an ideal shopping center for visitors and residents alike with a unique mix of both high-end and midrange retailers. We are thrilled to be there."

Forever 21's business model works by keeping stores exciting with the hottest and most current fashion trends brought in daily. The Waikiki store will deliver a large assortment of trend-setting merchandise at great value and serve as a one-stop-shop for customers' personal, professional and family lifestyle fashion needs. The store size, merchandise mix and design concept will allow Forever 21 to introduce more of its brand labels to the Hawaii market such as Heritage 1981®, 21Men™ and Love 21® Contemporary. Forever 21 will be open from 10:00 a.m. to 11:00 p.m. daily including Christmas and New Year's Day with validated parking for its customers.

For more information, call Lei Ohu Guest Services at (808) 922-2299 or visit [www.RoyalHawaiianCenter.com](http://www.RoyalHawaiianCenter.com).

Royal Hawaiian Center has the largest garage in the heart of Waikiki with 10 levels of parking and more than 600 stalls located adjacent to the Sheraton Waikiki Hotel. The Center's free parking promotion offers a variety of options. Holiday parking rates include 3 hours of free parking with any restaurant validation, 2 hours free parking with any food court validation, or 1 hour free parking with \$1 per hour thereafter for a maximum of 4 hours for \$3 for any retail validation. No minimum purchase is required for validation. Validations cannot be combined.

## Hawaii Prince Hotel Waikiki – New Year Celebrations

### New Year's Eve

- Prince Court: New Year's Eve Dinner Buffet on Friday, December 31 from 5:30-10 pm. Some of the special buffet stations include Sushi, Seafood, Vietnamese Pho, and Roast & Kalua Pig for \$69/adults and \$34.50/children ages 6-10. For more information and reservations, please call (808) 944-4494.
- Hakone: New Year's Eve Dinner Buffet on Friday, December 31 from 5-9 pm includes favorite Japanese dishes. Buffet prices are for \$51/adults and \$24.50/children ages 6-10. For more information and reservations, please call (808) 944-4494.

### New Year's Day

- Prince Court: New Year's Day Brunch Buffet on Saturday, January 1 from 10 am-2 pm. Buffet includes pastry assortment, fresh fruits, assorted dim sum, and omelet station for \$51/adult and \$25.50/children ages 6-10. For more information and reservations, please call (808) 944-4494.
- Prince Court: New Year's Dinner Buffet on Saturday, January 1 from 5-9 pm includes Shabu Shabu, Poached Crab Legs, and a Prime Rib carving station. Buffet prices are \$51/adult and \$25.50/children ages 6-10. For more information and reservations, please call (808) 944-4494.
- Hakone: New Year's Dinner Buffet on Saturday, January 1 and Sunday, January 2 from 5-9 pm featuring traditional Japanese dishes. Buffet prices are \$60/adults and \$30/children ages 6-10. For more information and reservations, please call (808) 944-4494.

---

## Hawai'i Convention Center recognized for third consecutive time by Business Traveler magazine

*Business Traveler* magazine, the world's leading publication for frequent business travelers, has recognized the Hawai'i Convention Center with its 2011 Best in Business Travel award in the category of Best Conference or Convention Center/City. The Hawai'i Convention Center has won this award each of the three years since the category was introduced in 2009. The award was presented December 9 at an awards gala in Los Angeles.

"It is such an honor to be selected by *Business Traveler* magazine as the Best Conference or Convention Center/City for three consecutive years," said Joe Davis, SMG general manager of the Hawai'i Convention Center. "The Hawai'i Convention Center is always working to improve the experience of our conference guests and attendees. This means strengthening neighbor island ties, continuing international and business outreach, and offering the latest conference technologies. We are also eagerly looking forward to showcasing Hawai'i to multi-national corporations and the world as the host of the prestigious November 2011 Asia Pacific Economic Cooperation (APEC) Leaders Meetings."

"This award recognizes not only the efforts of the Hawai'i Convention Center, but also the City of Honolulu and the State of Hawai'i, in offering our guests a genuine aloha experience," Davis added.

"Congratulations to the Hawai'i Convention Center (HCC) on receiving this prestigious award. This is a testament to the world-class facilities and outstanding service HCC and our visitor industry provides to business groups who select our islands," said Mike McCartney, president and CEO of the Hawai'i Tourism Authority (HTA). "The meetings market is vital to the overall health of Hawaii's tourism economy, and the HTA will continue to work with HCC/SMG to aggressively promote and deliver upon on our incomparability as a global meetings destination." Winners were chosen using the following criteria:

- 8,000 *Business Traveler* subscribers were randomly selected and mailed surveys.
- Survey consisted of open-ended questions with no suggested names or choices given.
- Respondents were given two reply options, online or by postage-paid return envelope, depending on how they received the survey. Online submissions required a unique code to prevent multiple or fraudulent entries.

SMG markets and manages the Hawai'i Convention Center under the direction and support of the Hawai'i Tourism Authority, the state's tourism agency. The Hawai'i Tourism Authority was created in 1998 to ensure a successful visitor industry well into the future. Its mission is to strategically manage Hawai'i tourism in a sustainable manner consistent with the state of Hawai'i's economic goals, cultural values, preservation of natural resources, community desires and visitor industry needs.



## Star offers complete whale watch experience, including whale guarantee and "child free!"

Guests can observe and gain insight on Hawaii's annual whale visitors aboard the Star of Honolulu's 2.5-hour Premier Whale Watch Cruise. Offered daily from December 15, 2010 through May 8, 2011, this complete experience features the best facilities for viewing whales, guaranteed sightings and educational whale activities. Plus, in an effort to make it possible for the whole family to enjoy Winter's "must do" eco-tour, the STAR is offering a "Child FREE" (per paid adult) special.

Hawaii's largest tour vessel, the 232' A.D.A. compliant Star of Honolulu, departs from Aloha Tower Marketplace and cruises beyond Diamond Head to give passengers the most opportunities to view whales and their newborn calves. With a spacious 60' high observation deck, four walk-around decks and three types of stabilizers designed especially for Hawaiian waters, the STAR also offers the most outdoor deck space as guests cruise in comfort. Whale sightings are guaranteed; if whales are not spotted a free return cruise voucher is issued to try again. Plus cruise-goers can learn about Humpback whales from the trained Naturalist crew, narration, handout and video presentation. As a bonus, they can also participate in hands-on educational programs and fun Hawaiian cultural activities including *lei* making, *ukulele* and *hula* lessons.



Suggested retail prices are \$59.00 for adults and \$35.50 for children (ages 3-11) and includes a Taste of Hawaii buffet lunch. Cruise without lunch is \$43.00 for adults and \$26.00 for children. Round-trip motorcoach transportation from the Waikiki area is also available at an additional \$11.00 per person.

A brand new Early Bird Whale Watch is also available aboard the STAR from 8:45-10:45 a.m. for a discounted price.

For reservations or more information about any of the above whale watches, please call toll-free at 1-800-334-6191 or visit [www.starofhonolulu.com](http://www.starofhonolulu.com).

In Hawaii, dial (808) 983-STAR (7827).



---

## Tis the season to celebrate the holidays with weekly festivities at The Moana Surfrider, aa Westin Resort & Spa

The Moana Surfrider, A Westin Resort & Spa will host a variety of holiday events from December 18 to January 1. The First Lady of Waikiki's "Tis the Season" celebration will include spa treatments, breakfast with Santa, and special dining packages. Price of admission will range depending upon event.

"Tis the Season" festivities will take place at the following location and times:

Saturday and Sunday, December 18 and 19:

"Breakfast with Santa at The Veranda" – Enjoy a breakfast buffet with Santa Claus at The Veranda from 9 a.m. to noon. Children will receive a keepsake photo with Santa and an opportunity to decorate gingerbread men with Executive Chef Richard Lancaster. Price is \$40 for adults and \$30 for children 12 years and under. Reservations are highly recommended.



Monday, December 20 and 27:

"Lei Making" – Experience a lei making class under the iconic Banyan tree in the Banyan Courtyard from 12:30 to 1:30 p.m. Admission is free.

Tuesday, December 21 and 28:

"Historical Tour and lunch" – Learn about eleven decades of history and rich heritage at the Moana Surfrider through a guided tour and enjoy a three-course lunch at The Veranda from 11 a.m. to 2 p.m. Price is \$40 per person. Reservations are highly recommended.

Wednesday, December 22 and 29:

"Wine Wednesday" – Wine lovers are invited to enjoy appetizers paired with Wines of the Week and engage with certified sommeliers at the Beachhouse restaurant lounge from 5:30 to 6:30 p.m. Cost for Wine Wednesday is \$20 per person.

Thursday, December 23:

"Sandman and Sandcastle Competition" – Families are encouraged to enter in a complimentary sand sculpture building competition on Waikiki Beach. Participants are invited to register at the Beach Bar at 10 a.m. and will be escorted to the competition site. A panel of judges will determine winners for each category.

Friday, December 24:

"High Tea Class at The Veranda" – Enjoy traditional afternoon tea at The Veranda on Christmas Eve from noon to 2 p.m. First Lady of Waikiki's Executive Chef Richard Lancaster will explain the signature teas offered on the Afternoon Tea menu and England native, Mary Allum will share etiquette tips and the significance of high tea. Cost is \$50 per person and reservations are highly recommended.

Saturday, December 25:

"Christmas Holiday Breakfast" – Kick-off Christmas Day with a breakfast buffet at The Veranda from 6 to 9:30 a.m. Price is \$28 for adults and \$15.25 for children 12 years and under.

"Christmas Holiday Brunch" – Executive Chef Richard Lancaster will create a celebration feast for families to enjoy at The Veranda from 10 a.m. to 1:30 p.m. Cost is \$95 for adults and \$55 for children 12 years and under. Reservations are highly recommended.

"Christmas Holiday Dinner" – Beachhouse at the Moana's Executive Chef Rodney Uyehara will feature favorite holiday dishes to celebrate Christmas Day. The special holiday dinner menu will be available from 5:30 to 9 p.m. Reservations are highly recommended.

Continued on next page

---

Continued from previous page

Sunday to Tuesday, December 26 to 28:

“Surf Simulator” – Guests are invited to experience the invigoration of surfing without entering the water. Enjoy the surf simulator located in the courtyard each day from noon to 3 p.m.

Friday, December 31:

“NYE Banyan Courtyard Dinner” and “Pre-Resolution NYE Party” – Celebrate New Year’s Eve with dinner, live entertainment and an after-party from 9 p.m. to 1 a.m. Beachhouse at the Moana will offer two dinner seating times: the first seating from 5:30 to 7 p.m. will feature a four-course menu for \$100 per person and the second seating from 8:30 to 10 p.m. will feature a five-course menu for \$185 per person. Dinner will include an appetizer and dessert buffet located in Lani Kai ballroom. Second seating guests will also enjoy full access to the “Pre-resolution NYE Party” in the Banyan Courtyard, inclusive with the dinner price. VIP seating with bottle service for “Pre-resolution NYE Party” is available at an additional price. Reservations are highly recommended.

Saturday, January 1:

“Mimosa and Sparkling Wine Buffet” – Guests can indulge in a New Year’s Day breakfast buffet at The Veranda while sipping on Mimosas or sparkling wine from 6 to 11 a.m. for \$45 per person. Reservations are highly recommended.

Self parking is available at the Sheraton Princess Kaiulani and is complimentary for four hours with validation at the Mangoes at the Moana event.

For more information on Moana Surfrider’s “Tis the Season” list of events or the Moana Lani Spa, please call (808) 922-3111.

For dining reservations, please call the Starwood Waikiki Dining Desk at (808) 921-4600.

## Rumfire and the edge of Waikīkī will host an “oceanfront sin city meets New York City Times Square” celebration on New Year’s Eve

Sheraton Waikiki’s RumFire and The Edge of Waikiki will join to ignite New Year’s Eve with a Las Vegas and New York City themed event. “Oceanfront Sin City meets New York City Times Square” will be held on Friday, December 31 from 8 p.m. to 2:30 a.m. Pre-sale tickets are \$40 until December 30 and will be available for purchase on location for \$50. VIP packages will also be available at an additional price. Grand prize offerings will include 5 days accommodation and airfare to Las Vegas or New York City.

Celebrate and party Las Vegas style at The Edge of Waikiki and experience an oceanfront New York City as RumFire transforms into Times Square. Music by DJ Betty will kick off evening’s entertainment program and followed by performances including Bacardi Cabaret Girls and Boys, Vegas Show Girls, and a multitude of celebrity impersonators. Explore living art with graffiti body paint artists and spray paint artists. Count down to a new year with Sheraton Waikiki’s version of Times Square ball drop starting from the top of the resort to be followed by a perfect view of the extravagant fireworks display at midnight.

Complimentary four hour valet and self parking is available.

For more information or to make reservations, please call Starwood Waikiki Dining Desk at (808) 922-4422 or visit [www.rumfirewaikiki.com](http://www.rumfirewaikiki.com).

# Hyatt Waikiki for the Holidays

## *Holiday delicacies feature at resort restaurants*

This year, savor two amazing five-course holiday menus all in one convenient location. Hyatt Regency Waikiki Beach Resort and Spa, located at 2424 Kalakaua Avenue is offering incredible Holiday cuisine that includes a mix of seafood, steak, and fresh vegetables for \$65 at Ciao Mein Restaurant - located on the third floor, or \$59 per person at The Colony - located on the second floor. Both locations are open nightly from 6:00 p.m. to 10:00 p.m. Holiday cocktails are also served at each location. The menus are available December 24 and 25 only. Reservations may be made at (808) 923-CIAO for Ciao Mein or (808) 237-6140 for The Colony. Parking is complimentary upon restaurant validation.

### Ciao Mein - Italian/Chinese Fusion Cuisine

Caesar salad with five-spice soft shell crab tempura  
Cream of pumpkin soup with sea scallops  
Shrimp scampi linguini  
Steamed snapper filet with Berkshire ham and shiitake mushroom  
Prime sirloin of beef in collision black pepper sauce  
Trio of pana cotta: amaretto, Frangelico, and sambuca

### Colony - Steak, Seafood, and Sushi

Butternut squash bisque and crème fraiche with seared sea scallops wrapped in cured ham with sweet corn relish  
Petite filet mignon with cranberry demi, sweet potato mash and caramel carrots with  
Crab stuffed jumbo prawn over poached asparagus and citrus butter  
Bouche d'Noel of chestnut mascarpone mousse, swirled butter cream and red currant syrup with cinnamon spiced peach and pear tartlet and sugared hazelnuts.



To find out more about the restaurants at Hyatt Regency Waikiki, please visit [waikiki.hyatt.com](http://waikiki.hyatt.com).

The resort is looking for great Holiday recipes. The individual who sends the winning recipe will receive two nights and dinner for two at Hyatt Regency Waikiki.

For information on how to enter, please visit the hotel [Facebook page](#).

## **Hawaiian Diacritical Marks**

Waikikī Improvement Association recognizes the use of diacritical marks (i.e., glottal stop (ʻ), macron (ā) in place names of Hawaiʻi, such as Waikikī and Kalākaua Avenue and will include them whenever possible. We also respect the individual use (or not) of these markings for names of organizations and businesses.

There will also be times when we may not have a chance to add or change the markings in all of the articles submitted and when that happens, e kala mai.



---

## *Party with the Stars at Hilton Hawaiian Village on New Year's Eve*

*Not just one, but two great concerts will keep the music flowing at the Coral Ballroom*

Hilton Hawaiian Village Beach Resort & Spa is starting its golden anniversary off with double headliners this New Year's Eve. Internationally-acclaimed impressionist, André-Philippe Gagnon, and the most successful recording duo from Hawaii, Cecilio and Kapono, will close out 2010 at Hilton Hawaiian Village's New Year's Eve *Party with the Stars*.

Since the international Just for Laugh's Festival in 1985, and his subsequent appearance with Johnny Carson on The Tonight Show, Andre Philippe Gagnon has become one of Canada's most renowned artists. Gagnon's show is a spellbinding cross between comedy act and concert with a cast of hundreds! From Mick Jagger to Louis Armstrong to Fred Flintstone, his impressions of famous personalities are rapid-fire magic. Gagnon has appeared in sold-out concerts across Europe, the U.S., Australia and the Caribbean. His most famous number is a virtuoso performance of all 18 voices in the legendary famine relief song, "We Are the World," which has become Gagnon's classic since he first sang it on TV for the song's co-writer and composer, Lionel Richie.

Cecilio & Kapono are considered Hawaii's most successful singing duo. In the 1970s, Cecilio & Kapono recorded three albums with Columbia Records: *Cecilio & Kapono*, *Elua* and *The Nightmusic*, all of which became top-selling albums. Their third album alone garnered five of the prestigious Na Hoku Hanohano Awards. Since then, they have maintained their place as Hawaii's most beloved composers and entertainers. Individually, Cecilio Rodriguez and Henry Kapono perform at the Hilton Hawaiian Village weekly. Rodriguez plays at the Tropics Bar & Grill on Thursdays and Fridays, while Kapono has starred in "The Wild Hawaiian Experience" at the resort's Super Pool Saturday evenings. New Year's Eve brings their harmonious voices together once again at the resort.



Doors to the Coral Ballroom will open at 9 p.m.; Gagnon will take the stage at 9:15, followed by Cecilio & Kapono from 10:30 p.m. through the start of 2011. The cost of the New Year's Eve concert is \$100 for premier seating and \$75 for general seating. The price includes a half bottle of champagne and party favors. Tickets are on sale in the hotel's main lobby or by calling the hotel at 947-7950.

Hilton Hawaiian Village is offering four fabulous options for pre-concert dining: Bali Steak & Seafood and Tropics Bar & Grill will offer special holiday prix fixe menus; Rainbow Lanai will feature a lavish New Year's Eve dinner buffet and the Waikiki Starlight Luau will offer a uniquely Hawaiian holiday menu followed by its exciting Voyage Across the South Seas revue.

The resort is also hosting a party at Twenty Eleven Lounge & Nightclub at Paradise Lounge in the Rainbow Tower. Top island band, Beach 5, will perform from 9 p.m. to midnight and a DJ will be spinning throughout the night. Ten different champagnes will be available by the glass, along with a full bar and dancing all evening long. The cover charge of \$25 for Lounge Twenty Eleven will be waived for anyone dining at Bali Steak & Seafood, Tropics Bar & Grill and Rainbow Lanai on New Year's Eve. Reserved VIP tables for up to six guests will be available at the lounge for an additional fee.

Hilton's signature Friday night fireworks will light up the sky one hour later at 8:45 p.m. on New Year's Eve. The spectacular display will not only celebrate the start of 2011, but the start of Hilton's 50<sup>th</sup> anniversary in Hawaii. A full year of festivities is planned at Hilton Hawaiian Village to commemorate the rebranding of the resort in 1961.

For further New Year's Eve information, call the Hilton Hawaiian Village at 949-4321. For a complete list of holiday events, menus, pricing and other information, click [here](#) or visit <http://www.hiltonhawaiianvillage.com/>

---

## Paint the town pink on New Year's Eve at the Royal Hawaiian, a Luxury Collection Resort, with three different "pink" celebrations

The Royal Hawaiian, a Luxury Collection Resort, presents an evening of dinner, drinks, and allure with an exclusive "Royal Pink Night" to ring in New Year's Day. The Mai Tai Bar, Azure Restaurant, and Monarch Room will host three distinct celebrations on Friday, December 31.

### The Pink Party

The Mai Tai Bar will be hosting a Pink Party from 9 p.m. to 12:30 a.m. Admission is \$50 per person and will include live band, and DJ entertainment for a night of dancing beneath the stars. VIP table reservations are also available for \$100. Enjoy an oceanfront firework display on Waikiki Beach at midnight to welcome the New Year.

### Azure Restaurant's New Year's Eve Pink Menu

Azure Restaurant will offer a five-course menu from 5:30 to 9 p.m. for \$160 per person. Dinner price will also include access to the resort's exclusive Pink Party at the Mai Tai Bar. Premium oceanfront or cabana style table seating is available for an additional price.

The five-course pink menu will include:

#### First Course

*Kona Abalone "Cappuccino"*  
*Myer lemon, clams, Enoki mushroom, Dashi cream*  
\*\*\*

#### Second Course

*Waialua Asparagus and Prosciutto de Parma*  
*Abalone mushroom, shaved Manchego, and smoked chile aioli*  
\*\*\*

#### Third Course

*Kona Lobster with Anchovy & Marrow Butter*  
*citrus corn, basil, and espelete*  
\*\*\*

#### Main Course

*(one choice)*  
*Prime Steak "Rib Eye"*  
*baby spinach, garlic Abalone mushrooms, black truffle, and Madeira sauce*

#### Azure Bouillabaisse

*Pier 38 Fresh Fish, Scallop, Shrimp, Clams, and Crab*

*"Blackened" Hawaiian Ahi with Crab and Lemongrass Crust*  
*red wine and wasabi sauce*  
\*\*\*

#### Dessert

*Chef's selection of dessert*



### Pink NYE Luau

Guests will be greeted in the Monarch Room with a complimentary "Pink Blush" beverage to start the evening's luau and entertainment program. The buffet-style feast will be available from 6:30 to 9 p.m. to be followed by a cultural Polynesian performance from 8 to 9 p.m. Prices for hotel guests are \$179 for adults and \$89 for children, and general public prices are \$199 for adults and \$99 for children.

The luau buffet will feature a cold station with extensive poke offerings including shrimp and tako poke made to order with onion, kim chee, ogo, sea salt, soy scallions and ginger wasabi. Additional cold items will include Big Island greens with honey mustard dressing, pine nuts, crispy bacon and orange segments, cucumber namasu, marinated butter fish, warm soba noodle seafood salad, warm potato salad and scattered sushi chips. A bevy of hot items will highlight a Kalua pig station with island condiments, huli huli chicken with roasted garlic and soft flat breads and Asian style steamed mahi mahi with wok fried vegetables. The dessert station will offer Waialua Estate chocolate coffee tasting, Coffee Pot O'Cream with island berries, flourless chocolate cake, macadamia nut cannoli with chocolate mousse, chocolate-peanut butter square, bruleed coconut custard on a coconut macaroon with coconut sauce, and shaved toasted coconut balls.

Four-hour complimentary self or valet parking is available with validation. For reservations and more information, please call the Starwood Waikiki Dining Desk at (808) 921-4600.

## Holiday Canned Food Drive



Staff at Duke's Waikiki



Jarett Makaimoku, Counselor Ala Wai

Each Holiday Season the Annual Canned Food Drive takes place for the Waikiki Community Centers "Emergency Food Pantry". WCC appreciates the donated (non-perishable) foods that were delivered to WCC this week from organizations and businesses. This Holiday Season over 1,400 pounds of canned foods were donated.

WCC wants to "Thank" Duke's Restaurant, Ala Wai Elementary School, Waikiki Elementary School, Jefferson Elementary School, Ali'i Manu & Halau and Hawai'i Hospitality Sales & Marketing Association International (HHSMAI) for donated foods. The Emergency Food Pantry is open each Tuesday from 1:00-4:00 p.m.

For more information visit our web site at: [www.waikikicommunitycenter.org](http://www.waikikicommunitycenter.org)

## Waikiki Hula Show at the Kūhiō Beach Hula Mound

Authentic Hawaiian music and hula shows by Hawai'i's finest hula *hālau hula* (dance troupes) and Hawaiian performers. Opens with traditional blowing of conch shell.

**Tues-Thurs-Sat-Sun**, weather-permitting from **6-7 p.m.** at the Kūhiō Beach Hula Mound, near Duke Kahanamoku statue, beachside at Uluniu & Kalākaua Ave. in Waikiki.

FREE and open to the public. Outdoors, casual, seating on the grass; beach chairs, mats, etc. okay. Cameras welcome. Presented by the City & County of Honolulu, the Hawai'i Tourism Authority and Waikiki Improvement Association.

For information, call Marnie Weeks, Producer, Kūhiō Beach Hula Shows, 843-8002.

### Week-nights

Every Tuesday – Ainsley Halemanu and Hula Hālau Ka Liko O Ka Palai

Every Thursday – Joan "Aunty Pudgie" Young and Puamelia

### Weekends

Sat Dec 18 – Joan S. Lindsey and the Joan S. Lindsey Hula Studio

Sun Dec 19 – Shirley Recca and Halau Hula O Namakahulali

Sat Dec 25 – NO SHOW – Merry Christmas!

Sun Dec 26 – Kale Pawai and Halau Na Pua Mai Ka Lani

2011

Sat Jan 1 – NO SHOW – Happy New Year!

Sun Jan 2 – Kale Pawai and Halau Na Pua Mai Ka Lani



**Best wishes for a safe and happy holidays!**

**Waikiki Wiki Wiki Wire resumes January 6, 2011!**



**Waikiki Improvement**

2255 Kuhio Avenue, Suite 760  
Honolulu, HI 96815

Phone: 808-923-1094, Fax: 808-923-2622

Waikiki Wiki Wiki Wire is published weekly by  
Sandi Yara Communications for WIA.  
If you would like to share your news with other  
members, please send your info to:  
[editor@waikikiimprovement.com](mailto:editor@waikikiimprovement.com).

Check out our website at:

[www.waikikiimprovement.com](http://www.waikikiimprovement.com)



## MEDIA ADVISORY

### FOR IMMEDIATE RELEASE

December 13, 2010

#### PAUAHI ALI'I COMMEMORATION AT ROYAL HAWAIIAN CENTER

**WHEN:** THURSDAY, DECEMBER 16, NOON

**WHERE:** **Royal Hawaiian Center, The Royal Grove**  
2201 Kalākaua Avenue (begins at Lewers and spans three blocks)

**WHAT:** In honor of the memory of Princess Bernice Pauahi Bishop, great-granddaughter of King Kamehameha I, Royal Hawaiian Center presents its annual Pauahi Ali'i Commemoration on Thursday, December 16, at noon.

Kahu David Ka'upu, retired chaplain of Kamehameha Schools, will preside over the commemoration. Hālau Mōhala 'Ilima under the direction of Kumu Hula Māpuana de Silva will offer a traditional hula in Pauahi's honor. Hālau o ke 'A'ali'i Kū Makani, under the direction of Royal Hawaiian Center's cultural director, Kumu Hula Manu Boyd, will perform "Hanohano Helumoa," the Nā Hōkū Hanohano Hawaiian song of the year, composed for Princess Pauahi and her Waikīkī lands. The Royal Hawaiian Band will bring the commemoration to a close with their semi-monthly concert at 1:00 p.m.

The event is free and open to the public, and will be held in The Royal Grove. Members of Hawaiian royal societies are expected to attend, and will present ho'okupu (tributes) of flower lei at the statue of Princess Pauahi in The Royal Grove created by Kamehameha graduate Sean Browne.

Princess Pauahi was born December 19, 1831 to High Chief Abner Pākī and Kamehameha's mo'opuna (granddaughter), High Chiefess Laura Konia, during the reign of her cousin Kūikeyouli – King Kamehameha III.

Royal Hawaiian Center is part of the estate of Bernice Pauahi Bishop, located at Helumoa, Waikīkī, inherited from her Kamehameha 'ohana (family). Before her passing in 1884, Pauahi and her husband, Charles Reed Bishop spent time at their "country home," Helumoa where the last council of her will was completed, establishing Kamehameha Schools for the education of Hawaiian children. In 1887, Kamehameha School for Boys opened at Kaiwi'ula, Honolulu. For 30 years, Royal Hawaiian Center at Helumoa has generated revenue in support of Kamehameha Schools with campuses at Kapālama, O'ahu; Kea'au, Hawai'i and Pukalani, Maui; as well as statewide early education programs.

-more-

ROYALHAWAIIANCENTER.COM

MANAGED BY THE FESTIVAL COMPANIES

**INFO:** Royal Hawaiian Center has the largest garage in the heart of Waikīkī with 10 levels of parking and more than 600 stalls located adjacent to the Sheraton Waikiki Hotel. The Center's free parking promotion offers a variety of options. Special event parking validation rates are available at \$5. No minimum purchase is required for validation. Validations cannot be combined.

**Holiday Parking Rates:**

- 3 hours of free parking with any restaurant validation
- 2 hours free parking with any food court validation
- 1 hour free parking with \$1 per hour thereafter for a maximum of 4 hours for \$3 for any retail validation

For more information call Lei 'Oahu Guest Services at (808) 922-2299 or visit [www.RoyalHawaiianCenter.com](http://www.RoyalHawaiianCenter.com)

###

**MEDIA CONTACTS:**

Dara Lum (808) 539-3491

McNeil Wilson Communications

Dara.Lum@MWC-Anthology.com

Manu Boyd (808) 931-3111

Royal Hawaiian Center

M.Boyd@festivalcos.com

**THE PERFECT PRACTICAL & STYLISH GIFTS FOR THIS  
HOLIDAY SEASON!**

German luggage maker, RIMOWA announces the perfect practical and stylish gifts for this holiday season!

Every year we ask ourselves what is the perfect present? By no means a last-minute gift, but something that is both practical and stylish: the Salsa Deluxe series suitcases, available in four dazzling colors, and the sophisticated Topas Titanium series models leave you spoiled for choice as there is certainly something there for all of your loved ones!



**Topas Titanium Cabin Multiwheel®**  
Dimensions: 57.0 cm x 44.5 cm x 25.0 cm  
\$1,340.00

**Salsa Deluxe Cabin Multiwheel®**  
Dimensions: 56.5 cm x 44.5 cm x 25.5 cm  
\$ 550.00

Take a Break in a Winter Wonderland. The water and temperature resistant aluminum suitcases from the Topas series can withstand any weather. The classic RIMOWA suitcase is so convenient to pack that even thick winter woollies fit neatly in – so now nothing is standing in the way of your crisp, cold winter holiday.

**RIMOWA Topas Cabin Trolley**  
Dimensions: 55.0 cm x 40.0 cm x 20.0 cm  
\$ 930.00

**RIMOWA Topas Beauty Case**  
Dimensions: 38.0 cm x 25.0 cm x 24.5 cm  
\$ 650.00

Pack your ski suit. Hopefully Father Christmas has read your Christmas list and has a suitcase on his sleigh! The RIMOWA Mini Trolley from the Topas aluminum series is just as practical as a larger one – all the other Christmas presents fit in there too for the Winter holiday.

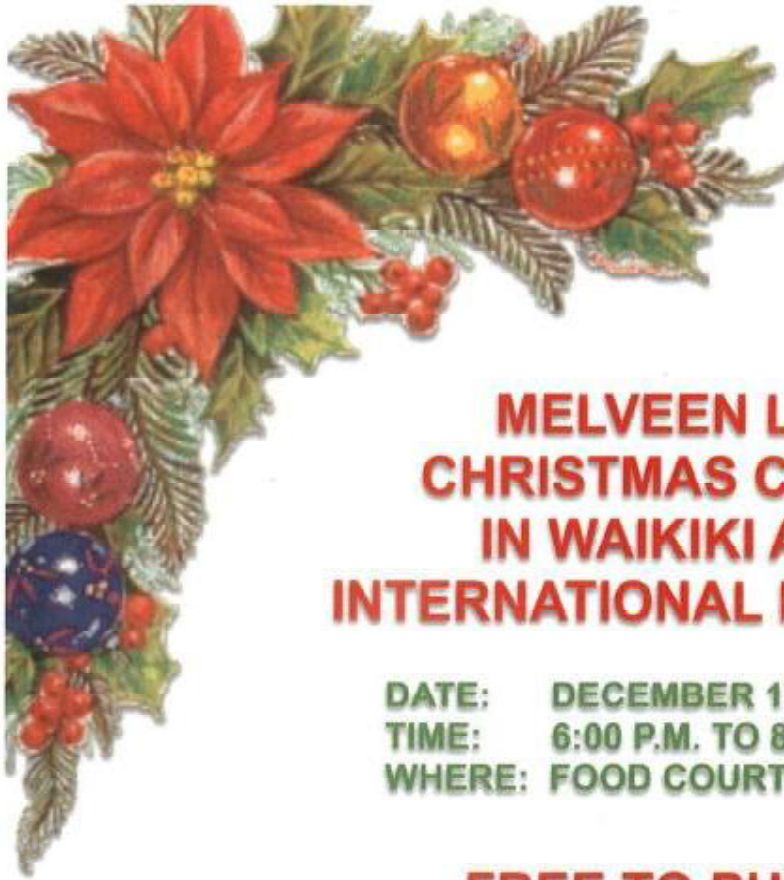
**RIMOWA Topas Mini Trolley**  
Dimensions: 44.5 cm x 33.0 cm x 20.0 cm  
\$ 815.00

RIMOWA sold its first travel luggage made out of aluminum. In 1950 the Cologne-based case manufacturer RIMOWA presented the first-ever corrugated aluminum case that quickly rose to become the preferred luggage of travelling society and impressed even then with its quality and lightness. Train and steamer trunks were the focus of manufacturing. But as the age of air travel began in the early 1950s, light and sturdy travel luggage was both important and socially acceptable. The first transatlantic connections were flown with aircraft such as the Super Constellation. The aluminum case from RIMOWA was already a beloved and secure passenger on these flights even then.

**Prices:**

Topas Titanium Cabin Multiwheel®	\$1,340.00
Topas Cabin Trolley	\$ 930.00
Topas Mini Trolley	\$ 815.00
Topas Beauty Case	\$ 650.00
Salsa Deluxe Cabin Multiwheel®	\$ 550.00

For more information, please visit [www.rimowa.com](http://www.rimowa.com)



**MELVEEN LEED  
CHRISTMAS CONCERT  
IN WAIKIKI AT THE  
INTERNATIONAL MARKETPLACE**

**DATE: DECEMBER 17, 2010  
TIME: 6:00 P.M. TO 8:00 P.M.  
WHERE: FOOD COURT CENTER STAGE**

**FREE TO PUBLIC**



**FEATURING:  
TITO BERINOBIS  
RODNEY CAZIMERO**

**\*MAKA PERRY  
\*COLBY BENSON  
\*JACK MORRISON  
\*NICKI LEE  
\*CHAUNA MAKAIANAI**

**SPECIAL GUESTS: SKIP TOMIYAMA  
BARBARA MARTIN**

**COME AND LISTEN OR SING ALONG TO YOUR  
FAVORITE CHRISTMAS CAROLS WITH MELVEEN  
AND HER SPECIAL GUESTS**





## NEWS RELEASE

### FOR IMMEDIATE RELEASE

December 9, 2010

#### **HOLIDAY PARKING OPTIONS AT ROYAL HAWAIIAN CENTER**

*Customers can enjoy one hour of free parking when shopping at Royal Hawaiian Center*

WAIKĪKĪ – For the Holidays, Royal Hawaiian Center is offering customers additional free parking options in Waikīkī.

“We have created an easy new parking validation program for our customers that offers affordable options for parking” said Marleen ‘Ākau, general manager for Royal Hawaiian Center. “While we are famous for our restaurants, we want to give people enough time to explore our flagship retailers and unique boutiques. Taking advantage of the Center’s free parking validation rates allows guests to support our diverse array of local businesses and global brands.”

#### **SHOPPING VALIDATION: 1 Hour free, \$1 per hour (4 hours max)**

Shop at any retailer at the Center and enjoy up to one hour of free parking, with \$1 per hour of parking thereafter, up to 4 hours maximum. This cannot be combined with any other validations. After this time, regular parking rates apply. There is no minimum purchase required for validation.

#### **RESTAURANT VALIDATION: 3 hours free**

Dine at any Royal Hawaiian Center full service restaurant and get three hours of validated parking. This cannot be combined with any other validations. After this time, regular parking rates apply. There is no minimum purchase required for validation.

#### **FOOD COURT VALIDATION: 2 hours free**

Grab a quick bite from any vendor at the Pā‘ina Lānai Food Court and receive two hours of free parking. This cannot be combined with any other validations. After this time, regular parking rates apply. There is no minimum purchase required for validation.

“The Royal Hawaiian Center parking rates we now offer are lower than anything you’d find in downtown Honolulu, or in other parts of Waikīkī between 10:00 a.m. and 10:00 p.m.,” says ‘Ākau. “We continue to be a strong supporter of offering affordable parking to our guests.”

-more-

The Center offers the largest parking garage in Waikīkī with 10 levels of parking and more than 600 stalls offering great parking rates for people to visit and enjoy the more than 110 shopping, dining and entertainment options at the Center.

Royal Hawaiian Center, the premier shopping and entertainment destination in Waikīkī, consists of more than 310,000 square feet along a three-block stretch of Waikīkī's famed Kalākaua Avenue. The Center has more than 100 shops and restaurants to excite every taste. Complimentary music, hula and culture classes are available in The Royal Grove. It is open daily from 10 a.m. to 10 p.m. and beyond with late-night rendezvous hot spots. The Center is situated on more than six acres of prime real estate in Waikīkī and is owned by Kamehameha Schools. To learn more about the Center, visit [www.RoyalHawaiianCenter.com](http://www.RoyalHawaiianCenter.com).

###

**Contacts:**

Dara Lum (808) 539-3491  
McNeil Wilson Communications  
[Dara.Lum@MWC-Anthology.com](mailto:Dara.Lum@MWC-Anthology.com)

Sam Shenkus (808) 931-3110  
Royal Hawaiian Center  
[S.Shenkus@festivalcos.com](mailto:S.Shenkus@festivalcos.com)

# Schedule of Events

December 19-25, 2010



## Sunday, 12/19

- OUTRIGGER REEF:** >9a-1p & 6-9p Kuloko Arts of Hawaii: Guest Artist (info. 922-5110)  
>6-9p Kani Ka Pila Grill: Brother Noland (info. 924-4990)
- OUTRIGGER WAIKIKI:** >4-6p Duke's: HENRY KAPONO / 9:30p-12a Lawrence Kidder (info. 922-2268)  
>7-9p Hula Grill: Bruce Spencer & Sonny Kalua with Jaime (info. 923-4852)
- WAIKIKI BEACH WALK:** >**5-6p Honolulu Boy Choir, Fountain Stage (info. 931-3591)**  
>6-6:45p Hula Implements work shop at MANA HI (info. 923-2220)

## Monday, 12/20

- HOLIDAY INN WAIKIKI BEACHCOMBER RESORT:** >10a-5p Jimmy Buffett's: Free Surfing Museum Tours (info. 791-1200)
- OUTRIGGER REEF:** >9a-1p & 6-9p Kuloko Arts of Hawaii: Guest Artist (info. 922-5110)  
>6-9p Kani Ka Pila Grille: Sean Naauao (info. 924-4990)
- OUTRIGGER WAIKIKI:** >4-6p Duke's: Haumea Warrington / 9:30p-12a Ellsworth Simeona (info. 922-2268)  
>7-9p Hula Grill: Eric Lee (info. 923-4852)
- WAIKIKI BEACH WALK:** >4-4:45p The Art of Lei Making at MANA Hawaii (info. 923-2220)  
>**6-7p Holiday Entertainment: Ka'ala Boyz, Fountain Stage (info. 931-3591)**

## Tuesday, 12/21

- HOLIDAY INN WAIKIKI BEACHCOMBER RESORT:** >10a-5p Free Surfing Museum Tours  
>8:30p Jimmy Buffett's: Kailua Bay Buddies (info. 791-1200)
- OUTRIGGER REEF:** >9a-1p & 6-9p Kuloko Arts of Hawaii: Guest Artist (info. 922-5110)  
>6-9p Kani Ka Pila Grille: Hoku Zuttermeister (info. 924-4990)
- OUTRIGGER WAIKIKI:** >4-6p Duke's: Haumea Warrington / 9:30p-12a Ellsworth Simeona (info. 922-2268)  
>7-9p Hula Grill: Kamuela Kahoano (info. 923-4852)
- WAIKIKI BEACH WALK:** >10-10:30a Learn Hawaiian Language at MANA Hawaii (info. 923-2220)  
>**4:30-6p Ku Ha'aeo~Evening Hula, Fountain Stage (info. 931-3591)**  
>**6-7p Holiday Entertainment: Kumu Leimomi Maldonado & Halau, Fountain Stage (info. 931-3591)**

## Wednesday, 12/22

- HOLIDAY INN WAIKIKI BEACHCOMBER RESORT:** >8:30p Jimmy Buffett's: Kailua Bay Buddies (info. 791-1200)
- OUTRIGGER REEF:** >9a-1p & 6-9p Kuloko Arts of Hawaii: Guest Artist (info. 922-5110)  
>6-9p Kani Ka Pila Grille: Cyril Pahinui (info. 924-4990)
- OUTRIGGER WAIKIKI:** >4-6p Duke's: Haumea Warrington / 9:30p-12a Ellsworth Simeona  
>6p Strolling Hawaiian music by Hemapa'a  
>7-9p Hula Grill: Jeremy Cheng (info. 923-4852)
- WAIKIKI BEACH WALK:** >4-4:45p Entry to Hula at MANA Hawaii (info. 923-2220)  
>**6-7p Holiday Entertainment: Po'okela Trio, Fountain Stage (info. 931-3591)**

## Thursday, 12/23

- HOLIDAY INN WAIKIKI BEACHCOMBER RESORT:** >9p Jimmy Buffett's: Kailua Bay Buddies (info. 791-1200)
- OUTRIGGER REEF:** >9a-1p & 6-9p Kuloko Arts of Hawaii: Guest Artist (info. 922-5110)  
>6-9p Kani Ka Pila Grille: Kawika Kahiapo & Del Beazley (info. 924-4990)
- OUTRIGGER WAIKIKI:** >4-6p Duke's: Haumea Warrington / 9:30p-12a Lawrence Kidder  
>7-9p Hula Grill: Sheila Waiwaiole & Mara Sagapolu (info. 923-4852)
- WAIKIKI BEACH WALK:** >4-4:45p Ukulele at MANA Hawaii (Mana Hawaii info. 923-2220)  
>9p-12a Giovanni Pastrami: Free Karaoke (info. 923-2100)  
>**6-7p Holiday Entertainment: Hema Pa'a, Fountain Stage (info. 931-3591)**

## Friday, 12/24

- HOLIDAY INN WAIKIKI BEACHCOMBER RESORT:** >9:30p Jimmy Buffett's: Piranha Brothers (info. 791-1200)
- OUTRIGGER REEF:** >9a-1p & 6-9p Kuloko Arts of Hawaii: Guest Artist (info. 922-5110)  
>6-9p Kani Ka Pila Grille: Sean Naauao (info. 924-4990)
- OUTRIGGER WAIKIKI:** >5p Piano by Jeanette Trivias, Lobby  
>4-6p Duke's: Maunalua / 9:30p-12a Duke's: Lawrence Kidder (info. 922-2268)  
>7-9p Hula Grill: David Asing & Kalani Maio with Jamie (info. 923-4852)
- WAIKIKI BEACH WALK:** >10-10:45a Hula at MANA Hawaii (info. 923-2220)  
>**6-7p Holiday Entertainment: Kamanawa, Fountain Stage (info. 931-3591)**

## Saturday, 12/25

- HOLIDAY INN WAIKIKI BEACHCOMBER RESORT:** >9:30p Jimmy Buffett's: Piranha Brothers (info. 791-1200)
- OUTRIGGER REEF:** >9a-1p & 6-9p Kuloko Arts of Hawaii: Guest Artist (info. 922-5110)  
>6-9p Kani Ka Pila Grille: Manoa Madness (info. 924-4990)
- OUTRIGGER WAIKIKI:** >4-6p Duke's: LIVE LOCAL ENTERTAINMENT / 9:30p-12a LIVE LOCAL ENTERTAINMENT (info. 922-2268)  
>7-9p Hula Grill: Kaipou Dabin & Kauokalani with Kahanu (info. 923-4852)
- WAIKIKI BEACH WALK:** >**6-7p Holiday Entertainment: Kaimana Collective, Fountain Stage (info. 931-3591)**



Activities are subject to change or cancellation without notice.

**For immediate release**

## **ShakaNet launches free WiFi to Honolulu International Airport to benefit both daily users and holiday travelers**

HONOLULU – December 8, 2010 – ShakaNet, Inc., the largest provider of wireless Internet services in Hawaii, today announced that it is partnering with FreeFi Networks Inc. to provide free wireless Internet access to passengers throughout the concourses, lounges and concession areas of Honolulu International Airport (HNL).

“This is the first deployment of free wireless services at Honolulu International Airport, the largest airport in the state of Hawaii,” said Nam Vu, Chief Technology Officer for ShakaNet. ShakaNet ([www.shaka.net](http://www.shaka.net)) provides Internet service at the airports throughout the islands of Hawaii as well as many of the state’s premier hotels.

“We’re happy to be able to provide this service at no cost to passengers at Honolulu International Airport during the holiday season,” Vu said. “We would especially like to welcome our Kama’aina to enjoy the free service on any device that has WiFi capabilities, even iPhones, other smart phones and iPads.”

Vu said that the new free Wi-Fi access will be a boon to many of the state’s commuters and business travelers who use the airport daily, in addition to the large influx of travelers coming to Hawaii during the holiday season. Over the next few weeks the ShakaNet/FreeFi partnership will announce many more locations where the ShakaNet Wi-Fi service will be available for free

FreeFi Networks is a premier provider of content and advertiser-supported Internet access for the traveling public. Free Wi-Fi access at Denver International Airport, Oakland International Airport and John Wayne Airport in Orange County California is currently powered by FreeFi Networks

“We are very excited to work with the FreeFi team leveraging their experience in providing free WiFi with our long-term commitment to providing quality service. Our goal is to deliver a free quality Internet experience to business and leisure travelers while generating revenue for the venue,” Vu said.

“ShakaNet offers an outstanding wireless experience for its customers in multiple venues across Hawaii,” said Richard Bogen, Chief Executive Officer of FreeFi Networks. “We are proud to be able to partner with them to provide fast, reliable and free wireless connectivity for the thousands of people using their systems daily.”

**About ShakaNet** ShakaNet is the largest Wireless Internet Service Provider (WISP) in Hawaii. Founded in 2002 and based in Honolulu, ShakaNet provides public Internet access solutions via Wi-Fi Hotspots, and custom locally-built Automated Internet Kiosks at more than 60 locations on four islands. ShakaNet also provides a full range of cost-effective Internet solutions for hotels, offices, apartments, condominiums and airports using wireless, traditional wired, and Automated Internet Kiosk solutions. For information, visit [www.shaka.net](http://www.shaka.net) or email [info@shaka.net](mailto:info@shaka.net).

**About FreeFi Networks** FreeFi Networks is a premier provider of content and advertiser-supported Wi-Fi networks in major transportation venues such as airports, trains, and buses. FreeFi is recognized for attracting national and regional advertisers including Charles Schwab, Zinio, FedEx, Ford Motor Company, Holiday Inn, MasterCard, Microsoft, Nokia, Sprint, Toshiba and Verizon, among others. FreeFi Networks also has partnered with Disney-ABC Domestic Television to provide popular video on demand rentals from the Walt Disney Studios. FreeFi Networks is headquartered in Los Angeles with offices in New York City and Boulder, CO. For information, visit [www.freefinet.com](http://www.freefinet.com), or contact Richard Bogen at [rich.bogen@freefinet.com](mailto:rich.bogen@freefinet.com) or Steven Green at [sgreen@freefinet.com](mailto:sgreen@freefinet.com).

# **WCC FARMERS MARKET**



## **Waikiki Community Center Farmers Market ~ Tuesday & Friday**

**7:00 a.m. – 12:30 p.m.**

**Fresh island produce, organic pastries & smoothies, hot off  
the grill foods! Location: 310 Paoakalani Ave**

**Plus available parking while shopping!**

**‘ŌLELO OLA O KA ‘ĀINA  
LIVING LANGUAGE OF THE LAND**

*Ho‘omana‘o*

**TO REMEMBER**

**E ho‘omana‘o kākou i nā hana lokomaika‘i a Pauahi, ke ali‘i i aloha nui  
‘ia e nā kini pua o ke kulāiwi.** *Let us pause to remember the benevolence  
of Bernice Pauahi Bishop, a chiefess beloved by her people.*

Join us today, Thurs., Dec. 16, at noon in The Royal Grove, as we remember the great-granddaughter of King Kamehameha I whose lands at Helumoa, Waikiki, are home to Royal Hawaiian Center. Revenues from our more than 100 shops and restaurants support the educational mission of Kamehameha Schools, established by the will of Pauahi. Her decision to create those schools was made here at her Helumoa home, just before her passing in 1884. Bernice Pauahi Pākī was born in Honolulu on December 19, 1831, to High Chiefess Konia, granddaughter of Kamehameha, and High Chief Pākī.



**Papahana Ho‘omana‘o Ali‘i no Bernice Pauahi Pākī Bishop**  
Thursday, December 16, 2010, awakea (noon), Royal Hawaiian Center at Helumoa  
Pule, oli, kāhili, mo‘olelo, hīmeni, hula, mea ‘ai māmā. E kipa mai me ke aloha!



## Aqua Hotels & Resorts welcomes Queen Kapi'olani Hotel

*Prominent Waikiki hotel added to Aqua's portfolio on December 1*

Aqua Hotels & Resorts ([www.aquaresorts.com](http://www.aquaresorts.com)), a full-service Hawai'i hotel management company, announced the addition of the 312-room Queen Kapi'olani Hotel to its Waikiki portfolio.

"Aqua's Hawai'i-based roots and leadership role in marketing unique hotels to visitors is an excellent fit for what we have been seeking to re-establish the Queen Kapi'olani," said Wayne Williams, a Partner with Warnick + Company and Asset Manager for YHB Hospitality Group. "The hotel has been welcoming guests for decades and its recent renovation and homage to Hawai'i's cultural and historic heritage is a refreshing addition to Waikiki's inventory. Mr. Y. S. Kim, President of YHB Hospitality, is excited to have our full-service hotel re-introduced to consumers by Aqua's talented sales and marketing team."

YHB Hospitality Group is based in Los Angeles, CA. The company purchased the Queen Kapi'olani Hotel in 2009. Since then, it has quietly worked to renovate and restore the hotel to its original ambiance and prestige.



"We are elated to have this significant and culturally-focused Waikiki hotel join our group, said Bill Henderson, VP of Development for Aqua Hotels & Resorts. "Queen Kapi'olani Hotel has been an island favorite for decades and Aqua looks forward to collaborating with the new owners to re-position it for its new beginning. Its premier location adjacent to the 108-acre Queen Kapi'olani Park and to Waikiki Beach, along with newly renovated guest rooms offering endless views of Diamond Head are very compelling reasons for travelers to stay here."

"Queen Kapi'olani Hotel has broad appeal and is perfect for families, groups and golfers – to name a few key travel segments," remarked Elizabeth Churchill, VP Sales & Marketing for Aqua. "We are developing packages that will attract a diversified group of consumers to this iconic hotel and in doing so, hope to create Waikiki's most Hawaiian hotel."

Continued on next page

### Inside this issue:

Free gift wrapping for Christmas plus shop and dine on Christmas Day!	2	Name our signature product contest	6
Holiday Cheer at Waikiki Beach Walk®	3	Park Shore Waikiki offering travelers "Everywhere Internet" - 4G personal hot spot	6
Hilton Hawaiian Village celebrates "Mele Kalikimaka" meals at signature restaurants	4	Hula Grill Waikiki offers live music and hula throughout the holiday season	7
Nagaoka Fireworks to light up the skies of Waikiki for the 17th Annual Honolulu Festival	5	WIA—One more reason to become a member	8
Prince Free Night promotion	5	Waikiki Hula Show at Kūhiō Beach Hula Mound	8

... and MORE

---

Continued from front page

Since acquisition of the hotel in 2009, YHB Hospitality Group has spent over \$5 million to renovate and upgrade the Queen Kapi'olani hotel. The process is nearing completion and includes improvements and enhancements to the exterior and entrance; renovation of the sun deck with new pool furniture and pool bar; upgrades to guest rooms including new carpet, furniture, bedding and more, creating a distinguished and attractive new option for travelers.

Located at 150 Kapahulu Avenue, Queen Kapi'olani Hotel is a 19-story, 312-room hotel offering a range of guest rooms with private lanai and magnificent views, high-speed Internet access, refrigerator and coffeemaker. Hotel amenities include third floor swimming pool and sundeck, ballroom and event facilities, Kūlana Terrace Restaurant & Bar and much more.



Queen Kapi'olani Hotel opened for business in 1969 and pays tribute to its namesake, Queen Kapi'olani, wife of Hawai'i's seventh and last ruling King. Gracing the hotel are museum-quality paintings of both King Kalākaua and Queen Kapi'olani, along with their niece, Princess Ka'iulani. True to its cultural heritage, the hotel's mission is to "tell the story of Hawai'i through the Queen's eyes and welcome guests from around the world."

---

## Free gift wrapping for Christmas plus shop and dine on Christmas Day!

**WHAT:** During the month of December, Royal Hawaiian Center is open EVERY DAY from 10 a.m. – 10:00 p.m. including Christmas Eve and Christmas Day! Have Holiday parties with your friends and family at any one of the Center's restaurants or get your last-minute Christmas shopping at more than 100 stores.

Complimentary gift wrapping will be available from December 20–24 between 11:30 a.m. – 2:00 p.m. and 5:00–10:00 p.m on the ground level of Building A, next to the Senor Frog's elevator. Present your Royal Hawaiian Center receipt and receive free gift wrapping services with any purchase of \$15 or more and also enter to win a \$100 gift card to the Center.

**WHERE:** Royal Hawaiian Center, 2201 Kalakaua Avenue (begins at Lewers and spans three blocks)

Royal Hawaiian Center has the largest garage in the heart of Waikiki with 10 levels of parking and more than 600 stalls located adjacent to the Sheraton Waikiki Hotel. The Center's free parking promotion offers a variety of options. Special event parking validation rates are available at \$5. No minimum purchase is required for validation. Validations cannot be combined.

### Holiday Parking Rates:

- 3 hours of free parking with any restaurant validation
- 2 hours free parking with any food court validation
- 1 hour free parking with \$1 per hour thereafter for a maximum of 4 hours for \$3 with any retail validation

**INFO:** For more information, call Lei Ohu Guest Services at (808) 922-2299 or visit [www.RoyalHawaiianCenter.com](http://www.RoyalHawaiianCenter.com).



---

## Holiday Cheer at Waikiki Beach Walk®

*Celebrate the Holidays and Countdown to Christmas with various Entertainment at Waikiki Beach Walk*

Shopping, dining and entertainment, everything you can ask for in one location. At Waikiki Beach Walk, you can have it all. During the month of December, enjoy free live nightly entertainment while shopping for a gift for that special someone on your list.

Waikiki Beach Walk supports and perpetuates Hawaiian music and culture and is proud to present local home-grown artists during its special Countdown to Christmas which begins on Saturday, December 18, 2010, from 6:00pm – 7:00pm (unless otherwise noted) at the Plaza Stage.

Entertainment line-up includes:

December 18 – Kumu Hokuaulani Hinipali – performing with Halau Olapakuikala'i & Hawaii Serenaders

December 19 – Honolulu Boy Choir (5:00pm – 6:00pm) – special holiday concert

December 20 – Ka'ala Boyz – accompanied by hula halau performances.

December 21 – Ku Ha'aheo (4:30pm – 6:00pm) featuring Kekaniwai and guest Bryan Tolentino & Halau Ka Waikahe Lani Malie dancers, Kumu Leimomi Maldonado (6:00pm – 7:00pm) – featuring keiki to kupuna hula halau.

December 22 – Po'okela Trio – featuring Greg Sardinha & The Blue Hawaii Dancers.

December 23 – Hema pa'a – featuring Baba Alimoot and Chris Kamaka with hula Halau performers

December 24 – Kamanawa – featuring Blaine Kia and Kalei Kahalewai with special guest hula performers.

December 25 – Kaimana Collective – an evening of island music and Christmas cheer featuring the Kia 'Ohana – a family treat.

When hunger calls, dine in at one of the six restaurants located throughout the center. With Giovanni Pastrami, YardHouse, Cheeseburger Beachwalk, Kaiwa, Roy's Waikiki, Ruth's Chris Steak House, and Taormina Sicilian Cuisine, there's something to satisfy any appetite. If a quick bite is what you seek, Subway, Sushi2Go, and Coffee Bean & Tea Leaf offers convenient meals for the busy shopper.

What's more? Parking is a snap with FREE PARKING 10am to 3pm with any same-day \$10 receipt and validated parking ticket. And convenient evening valet parking is just \$6.00 for up to four hours at the Embassy Suites-Waikiki Beach Walk (201 Beachwalk) and the Wyndham Vacation Ownership-Waikiki Beach Walk (227 Lewers Street), with any same-day purchase from any Waikiki Beach Walk merchant.

For more information, contact the Waikiki Beach Walk's management office at (808) 931-3591.

### Wiki Wiki Wire update ...

The newsletter is taking a two week holiday break.

There will be no issue on December 23 or December 30.

Wiki Wiki Wire resumes on January 6, 2011.



---

## Hilton Hawaiian Village Beach Resort & Spa celebrates “Mele Kalikimaka” meals at signature restaurants

*Tropics Bar & Grill, Rainbow Lanai, and Bali Steak & Seafood will keep guests well fed on both Christmas Eve and Christmas Day*

Hilton Hawaiian Village Beach Resort & Spa is celebrating the season with festive spreads that'll bring holiday cheer to three restaurants at the resort.

At Tropics Bar & Grill, one of two beachfront eateries at the resort, Chef Shannon Olvera and her team are serving up a four-course dinner that starts off with a Maui onion truffle bisque, followed by a grilled and chilled lemon pepper scallop salad. For the entrée, diners have a choice between grilled ribeye steak with roasted peppers and gorgonzola mashed potatoes; pan-seared island ono and crispy shrimp with Hamakua mushrooms and spinach risotto cakes; and Tropics roasted half chicken. The dessert is a sugar and spice crème brûlée and bouche noel with seasonal berries. The price of Tropics' Christmas Eve and Christmas Day dinners is \$47 for adults and \$23.50 for children under the age of 12. A la carte pricing is available for individual menu items as well.



Rainbow Lanai on the ground floor of Rainbow Tower, is offering a Christmas Eve and Christmas Day dinner buffet between 5:30 and 9:30 p.m. The buffet is a lavish spread that includes the following cold items: mixed island farm greens, baby arugula salad with roasted beets, orange and roasted fennel salad, chopped cobb salad with chicken, avocado, bacon and tomatoes, as well as cold soba noodles. Other cold items include sake-poached shrimp, nigiri sushi, ahi and tako poke, a cheese display with a variety of cheeses, as well as fresh seasonal sliced fruit. There'll be a chef-action station featured baked oysters and clams, hibachi sate, and scallion fried rice. Other hot items include herbed-baked yukon potatoes, macaroni and cheese, sautéed French beans, petite Sheppard's pie, Chinese roast duck, and tomato and clam chowder. At the carving station, there'll be prime rib with au jus and horseradish and baked Pacific snapper. A dessert station will feature a variety of desserts such as Christmas yule log, chestnut cake, eggnog panna cotta, chocolate pistachio cake, coconut rice pudding, cranberry cheesecake, candy cane white chocolate mousse, mini strawberry tart, and a Rainbow ice cream. The cost is \$55 for adults and \$27 for children under the age of 12.



At the resort's culinary landmark, *Bali Steak & Seafood*, Chef Brett Villarmia presents an exquisite four-course dinner on both Christmas Eve and Christmas Day from 5:30 to 9:30 p.m. Diners have a choice of oxtail soup with braised oxtail wonton or Kona lobster bisque with black truffle crème fraîche; seared ahi “panzanella” with wasabi or Hirabara Farms' mixed greens with heart of palm. They can select one entrée among the following: grilled petite New York steak; pan-roasted pacific snapper and green papaya relish; grilled lehua blossom honey-brined poussin with Hauula tomato risotto; or Hauula tomato risotto with opal basil pesto and lemon extra virgin olive oil. The dessert of chocolate hazelnut Yule log with egg nog panna cotta ends the evening on a sweet note. The prices for Bali's Christmas Eve and Christmas Day dinners is \$75 for adults and \$45 for children under the age of 12.

On Christmas Eve, the Hilton Hawaiian Village will also present its Friday night fireworks at its normal time of 7:45 p.m. Reservations for Rainbow Lanai and Bali Steak & Seafood can be made by calling the hotel at 949-4321, and asking for dining reservations. Seating for Tropics Bar & Grill is on a first-come, first-served basis.

---

## Nagaoka Fireworks to light up the skies of Waikīkī for the 17th Annual Honolulu Festival

*The Nagaoka Fireworks from Niigata Prefecture, Japan will be presented at the 17th Annual Honolulu Festival, to be held from March 11-13, 2011*

There is a very ironic connection between the cities of Honolulu and Nagaoka.

It is a story that began with sadness, but is ending with joy and hope for the future. It is a prime example of our sincere desire for Japanese American friendship. Nagaoka was attacked by American forces air raids immediately before the end of World War II. Honolulu's Pearl Harbor was attacked by the Japanese military resulting in America's entry into World War II. The Japanese commander of the Pearl Harbor attack was Naval Marshal General and the Commander-in-Chief of the Combined Fleet of Japan Isoroku Yamamoto, born in Nagaoka. It is also interesting that history indicates that General Yamamoto was against starting war with the United States until the very end.

Very complicated and unfortunate historical facts connect the two cities of Nagaoka and Honolulu. It was the desire of the people of both cities to honor those who sacrificed their lives in Nagaoka and Pearl Harbor.

It was decided that displaying the Nagaoka Fireworks in Honolulu would be a wonderful memorial service for all those who lost their lives.

The memorial service, Nagaoka's "Fireworks for World Peace" display will be staged at the 17th Annual Honolulu Festival in March 2011.

This special event will allow those performing in the Honolulu Festival, visitors and spectators to join forces and pray for world peace. We will all get the chance to admire the beautiful fireworks display. This will be a very rare opportunity, perhaps a once in a lifetime experience.

It is the Honolulu Festival Foundation's desire to share this spectacular "Fireworks for World Peace" with as many spectators as possible. May we all unite to pray for world peace.

The Nagaoka Fireworks will be displayed on March 13, 2011 Sunday, after the Honolulu Festival Grand Parade to be held in Waikīkī, down Kalākaua Avenue.

The fireworks will be launched from the waters off Waikīkī Beach.

---

## Prince Free Night Promotion

Receive a free night when booking a room at special rates at three of Prince's properties:

Hawaii Prince Hotel Waikiki and Golf Club

Fourth night is free when booking three consecutive nights. Oceanfront Vista rooms start at \$229/night.

The Prince Free Night Promotion offer is valid for stays between January 3 - March 31, 2011. Consecutive night stays will qualify for additional free nights. Blackout dates and some restrictions may apply.

For reservations, bookings and more information call 1-866-PRINCE-6 or visit [www.PrinceResortsHawaii.com/FreeNight](http://www.PrinceResortsHawaii.com/FreeNight).

---

## Name our signature product contest

### *Na Ho'ola Spa Twitter contest offers signature product basket*

Na Ho'ola Spa at Hyatt Regency Waikiki Beach Resort and Spa, located at 2424 Kalākaua Avenue, announces a new Twitter contest for the creative mindset. Waikiki's first resort spa wants Twitter followers to send in names for its signature scrub. The follower who sends the winning selection to @NaHo'olaSpa will receive the perfect gift for those days when a trip to the spa just is not possible - a basket of spa products and a spa robe.

"The scrub includes several of our signature ingredients: noni, kalo, and kukui nut oil. These ingredients are a vital part of our mission to perpetuate the Hawaiian culture through our treatments and product offerings. This new scrub has a rich, mango scent, combined with Hawaiian cane sugar to gently exfoliate the skin leaving it smooth and nourished", says Jerry Ferreira, director of Na Ho'ola Spa.

A full-service spa, Na Ho'ola offers guests a place to rejuvenate the body, mind and spirit. In addition to conventional treatments, the spa perpetuates health and wellness through the practice of Hawaiian culture and values. The Spa offers massages, healing stone treatments, body wraps and scrubs, facials, specialty treatments, and waxing services. Additional information is available at [nahoolaspa.com](http://nahoolaspa.com).



---

## Park Shore Waikiki offering travelers "Everywhere Internet" - 4G personal hot spot

Park Shore Waikiki has partnered with [www.clear.com](http://www.clear.com) to offer guests booked at the hotel the option of reserving a personal 4G hot spot router during their visit to Oahu.

"This is a great little device to have for anyone traveling with their laptop for business or pleasure," said Scott Pauli, Area General Manager. "In a nutshell, "Everywhere Internet" is a personal hot spot router, capable of providing secure Internet while attending meetings or exploring and driving around the island."

According to Clear Spot, the device:

- Delivers unlimited 4G coverage throughout Oahu. Actually, they work everywhere CLEAR has 4G coverage, even in your car.
- Charges like a cell phone.
- Offers 4 hours of battery life before recharging is required.
- Can provide connection for up to eight devices (laptops, video games, etc.)
- Quick installation - no cable needed.
- Fits in the palm of your hand.

"I believe we're the only hotel currently offering this convenience to guests," added Pauli. "It's been a very popular technology amenity and the 4G speed is super fast."

"Everywhere Internet" is available to Park Shore Waikiki guests for \$8.95 per day and can be connected to eight devices.

---

## Hula Grill Waikiki offers live music and hula throughout the holiday season

Hula Grill Waikiki welcomes the Christmas season with live entertainment throughout December. The open-air, oceanfront restaurant will feature live music Monday through Thursday from 7-9 p.m. and hula on Fridays, Saturdays, and Sundays. Hula Grill Waikiki's entertainment schedule for December features:

### Monday

Eric Lee

### Tuesdays

Kamuella Kahoano

### Wednesdays

Jeremy Cheng

### Thursday

Sheila Waiwaiole & Mara Sagapolu

### Fridays

David Asing & Alike Souza with Jaime, December 3rd & 17th

Alike Souza & Kalani Maio with Jaime, December 10th

David Asing & Kalani Maio with Jaime, December 24th & 31st

### Saturdays

Kaipo Dabin & Buzzy Kealoha with Kahanu, November 4th

Kaipo Dabin & Kauokalani with Kahanu, November 11th, 18th & 25th

### Sundays

Bruce Spencer and Sonny Kalua with Jaime

Hula Grill Waikiki is a joint partnership between T S Restaurants and Outrigger Hotels & Resorts Hawaii. Hula Grill Waikiki is located directly above its sister restaurant Duke's Waikiki, on the second level of the Outrigger Waikiki on the Beach, 2335 Kalākaua Avenue. The open-air restaurant is open for breakfast from 6:30 to 10:30 a.m., dinner from 5 to 10 p.m., with the Plantation Bar open from 4 to 11:00 p.m. daily and Aloha Hour with food and beverage specials from 4 to 6 p.m. daily. Valet parking is available. For reservations or more information, call (808) 923-HULA (4852).

---

## New member coffee hour at Wakiki Community Center

NEW MEMBER Coffee Hour! Orientation to Waikiki Community Center for New Members is held on December 14<sup>th</sup> the second Tuesday of December at 10:00 AM. Meet on the Lanai. Register at the office or by calling 923-1802. Please visit our web page at: [www.waikikicommunitycenter.org](http://www.waikikicommunitycenter.org)

### Hawaiian Diacritical Marks

Waikikī Improvement Association recognizes the use of diacritical marks (i.e., glottal stop (ʻ), macron (ā) in place names of Hawaiʻi, such as Waikikī and Kalākaua Avenue and will include them whenever possible. We also respect the individual use (or not) of these markings for names of organizations and businesses.

There will also be times when we may not have a chance to add or change the markings in all of the articles submitted and when that happens, e kala mai.

## WIA — One more reason to become a member

Waikiki Improvement Association's objective is:

"to improve, enrich, and beautify Waikīkī for the benefit of residents and visitors alike, to promote conditions conducive to the economic and cultural good, and for the betterment of the entire community."

In its weekly electronic newsletter, [Waikiki Wiki Wiki Wire](#), news affecting Waikīkī and timely information and updates received from members and shared with other members, Waikīkī residents, businesses, government officials and select members of local and national media.

Submissions considered for the newsletter are:

- A benefit of paid membership
- Should be received by 3 pm Wednesday to ensure inclusion in the Thursday issue
- Images are always welcome and should be jpeg format (500 kb - 1 MB per image is best)
- PDFs of flyers welcome
- PDFs of news releases should have the 'date', 'city/state' and 'contact information' removed before submitting

If you know of an organization that would benefit by becoming a member, please have them contact Rick Egged at 923-1094 or [rick@waikikiimprovement.com](mailto:rick@waikikiimprovement.com).

## Waikīkī Hula Show at the Kūhiō Beach Hula Mound

Authentic Hawaiian music and hula shows by Hawai'i's finest hula *hālau hula* (dance troupes) and Hawaiian performers. Opens with traditional blowing of conch shell.

**Tues-Thurs-Sat-Sun**, weather-permitting from **6-7 p.m.** at the Kūhiō Beach Hula Mound, near Duke Kahanamoku statue, beachside at Uluniu & Kalākaua Ave. in Waikīkī.

FREE and open to the public. Outdoors, casual, seating on the grass; beach chairs, mats, etc. okay. Cameras welcome. Presented by the City & County of Honolulu, the Hawai'i Tourism Authority and Waikīkī Improvement Association.

For information, call Marnie Weeks, Producer, Kūhiō Beach Hula Shows, 843-8002.

### Week-nights

Every Tuesday – Ainsley Halemanu and Hula Hālau Ka Liko O Ka Palai

Every Thursday – Joan "Aunty Pudgie" Young and Puamelia

### Weekends

Sat Dec 11 – Coline Aiu and Halau Hula O Maiki

Sun Dec 12 – Sallie Yoza and Halau O Napuala'ikauika'iu



## Street activity in / near Waikīkī (courtesy of the City)

December 12, 2010 Sunday  
5:00AM Starts  
1:00PM Ends



HONOLULU MARATHON sponsored by Honolulu Marathon Association.

They expect to have 35,000+ runners.

It will start on Ala Moana Blvd., near Queen St., to Ala Moana Blvd., ewa bound, to Nu'uuanu Ave., to King St., to Kapi'olani Blvd., to Pi'ikoi St., to Ala Moana Blvd., to Kalākaua Ave., to Monsarrat Ave., to Paki Ave., to Diamond Hd. Rd., to 18th Ave., to Kīlauea Ave., to Wai'alae Ave., to Kalaniana'ole Hwy., to Hawai'i Kai Dr., to Keāhole St. to Kalaniana'ole Hwy., to Kealaolu Ave., to Kahala Ave., to Diamond Head Rd., to Kalākaua Ave., end at Honolulu Marathon finish/Kapi'olani Bandstand.

Roadways closed: 1)H1 Freeway closed at Wai'alae Ave. off ramp to 'Āina Koa Ave., 2)Kalanianaole Hwy., makai half closed for runners, between 'Āina Koa Ave. & Kawaihae St., mauka half converted to contra flow, 3)Kalaniana'ole Hwy., all lanes closed, between Kawaihao St. to Keāhole St.

Contact: Honolulu Marathon Assn. 734-7200 Fax: 732-7057

For more info, visit their website: <http://www.honolulumarathon.org/>



### Waikīkī Improvement Association

2255 Kuhio Avenue, Suite 760  
Honolulu, HI 96815

Phone: 808-923-1094, Fax: 808-923-2622

Waikīkī Wiki Wiki Wire is published weekly by  
Sandi Yara Communications for WIA.  
If you would like to share your news with other  
members, please send your info to:  
[editor@waikikiimprovement.com](mailto:editor@waikikiimprovement.com).

Check out our website at:

[www.waikikiimprovement.com](http://www.waikikiimprovement.com)

# Luxury Row

*presents*



Bobby Kini



Pu'uhonua



Taimane

*Entertainment 7:15-9:15 PM*

December 18th  
**Taimane Gardner**

December 19th  
**Pu`uhonua**

December 30th  
**Bobby Kini**

January 2nd  
**Pu`uhonua**



Waipuna Entertainment and the Queen Kapi'olani Hotel  
Presents the 2010 Holiday Concert Series:

2 NIGHTS ONLY!

# Nā Lei Makana



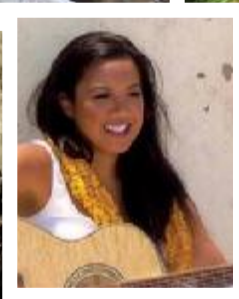
**FRI. DEC. 17**

Entertainment by  
Holunape, Mānoa DNA  
& Natalie Ai Kamauu



**SAT. DEC. 18**

Entertainment by  
Waipuna with Hālau  
O Nā Pua Kukui,  
Mailani Makainai &  
Weldon Kekauoha



**Return to the newly restored Queen Kapi'olani Hotel  
and celebrate the holidays Hawaiian style!**

Hosted by MC - "Boom Shaka Laka" Maka Herrod

**DOORS OPEN: 5:45 PM**

Ticket price: \$50.00, includes a  
full holiday buffet. Reservations:  
sales@queenkapiolani.com  
922-1941 or www.Likiki.com

Only valet parking at the hotel. Alter-  
native parking at the Zoo and Waikīkī  
Shell Parking Lots



# ANTEPRIMA

WIREBAG

## ANTEPRIMA/WIREBAG Launches New WIREBAG “Cristallo Fiocco\*R”

Also Offers Christmas Campaign from December 15  
Gift with Purchase and Free Wrapping Service

Honolulu, Hawaii – ANTEPRIMA/WIREBAG, A luxury handbag brand designed in Italy by a well-known Japanese designer, Ms. Izumi Ogino, announces launch of new WIREBAG “**Cristallo Fiocco\*R**” to be available on December 17, 2010. ANTEPRIMA/WIREBAG also offers **Christmas Campaign** starting December 15.

The long awaited new WIREBAG arrives from the “Cristallo Fiocco” series! Featuring crystal bow motif, “Cristallo Fiocco” was popular series for party bags such as clutch and mini handbag, and now launches this tote-type WIREBAG on December 17, 2010. This will be the very first tote bag in the “Cristallo Fiocco” series.

The new “Cristallo Fiocco\*R” has added features making it practical as a daily bag while keeping an elegant and feminine look. This lightweight and spacious bag can easily allow you to carry your daily stuff. You can use this bag in 4 ways; shoulder bag, cross-body bag, handbag and clutch bag with the detachable chain and the folding handle. It comes in large and small size.



### **“Cristallo Fiocco\*R” (\$343-\$474)**

Large Size (picture shown left)

- Size: W18 x H9 in
- Color: Orogento (Silver Gold) \$474
- Algento (Silver) \$403
- Rosa Metallico (Silver Pink) \$474
- Nero Opaco (Matt Black) \$403

Small Size (picture shown right)

- Size: W10.5 x H8 in
- Color: Orogento (Silver Gold) \$396
- Algento (Silver) \$343
- Rosa Metallico (Silver Pink) \$396
- Nero Opaco (Matt Black) \$343

# ANTEPRIMA

WIREBAG

ANTEPRIMA/WIREBAG also offers Special Christmas Campaign at both the Waikiki and the Ala Moana store starting from December 15, 2010.

**Campaign (1) : Free Christmas "Splendore" Charm (Retail Value \$60) with Purchase**

Receive a free Christmas "Splendore" Charm with purchase of \$550 or more at the Waikiki store or the Ala Moana store from December 15. You can pick from 4 different types of charms including cute bear and penguin with each holiday motifs such as snowman and Christmas tree while supplies last. The charm can be used for cell phone strap or key holder other than bag charm.



Christmas "Splendore" Charms (4 different types)  
with purchase of \$550 or more

**Campaign (2) : Free Wrapping Service with Antepima's Christmas Ornament**

Both the Waikiki store and the Ala Moana store offers free gift wrapping service to customers with purchase of any WIREBAG or pouch starting from December 15. The special Christmas wrapping comes with a very special limited edition Antepima perfume bottle motif ornament while supplies last. You can choose from two types of ornament designs available in two colors; white or gray. If you are looking for the ideal gift for your loved one, give them a beautifully wrapped Antepima WIREBAG.



Christmas Wrapping  
With Special Perfume Bottle Ornament

# Schedule of Events

December 12-18, 2010



## Sunday, 12/12

- OUTRIGGER REEF:** ➤9a-1p & 6-9p Kuloko Arts of Hawaii: Guest Artist (info. 922-5110)  
➤6-9p Kani Ka Pila Grill: Brother Noland (info. 924-4990)
- OUTRIGGER WAIKIKI:** ➤4-6p Duke's: HENRY KAPONO / 9:30p-12a Lawrence Kidder (info. 922-2268)  
➤7-9p Hula Grill: Bruce Spencer & Sonny Kalua with Jaime (info. 923-4852)
- WAIKIKI BEACH WALK:** ➤5-6p `Akala Dance Studio, Fountain Stage (info. 931-3591)  
➤6-6:45p Hula Implements work shop at MANA HI (info. 923-2220)

## Monday, 12/13

- HOLIDAY INN WAIKIKI BEACHCOMBER RESORT:** ➤10a-5p Jimmy Buffett's: Free Surfing Museum Tours (info. 791-1200)
- OUTRIGGER REEF:** ➤9a-1p & 6-9p Kuloko Arts of Hawaii: Guest Artist (info. 922-5110)  
➤6-9p Kani Ka Pila Grille: Sean Naauao (info. 924-4990)
- OUTRIGGER WAIKIKI:** ➤4-6p Duke's: Haumea Warrington / 9:30p-12a Ellsworth Simeona (info. 922-2268)
- WAIKIKI BEACH WALK:** ➤4-4:45p The Art of Lei Making at MANA Hawaii (info. 923-2220)

## Tuesday, 12/14

- HOLIDAY INN WAIKIKI BEACHCOMBER RESORT:** ➤10a-5p Free Surfing Museum Tours  
➤8:30p Jimmy Buffett's: Kailua Bay Buddies (info. 791-1200)
- OUTRIGGER REEF:** ➤9a-1p & 6-9p Kuloko Arts of Hawaii: Guest Artist (info. 922-5110)  
➤6-9p Kani Ka Pila Grille: Hoku Zuttermeister (info. 924-4990)
- OUTRIGGER WAIKIKI:** ➤4-6p Duke's: Haumea Warrington / 9:30p-12a Ellsworth Simeona (info. 922-2268)  
➤7-9p Hula Grill: LIVE LOCAL ENTERTAINMENT (info. 923-4852)
- WAIKIKI BEACH WALK:** ➤10-11a Na Poki`i O Na Ali`i Singers from Alvah Scott Elementary School, Fountain Stage (info. 931-3591)  
➤10-10:30a Learn Hawaiian Language at MANA Hawaii (info. 923-2220)  
➤4:30-6p Ku Ha`aheo~Evening Hula, Fountain Stage (info. 931-3591)

## Wednesday, 12/15

- HOLIDAY INN WAIKIKI BEACHCOMBER RESORT:** ➤8:30p Jimmy Buffett's: Kailua Bay Buddies (info. 791-1200)
- OUTRIGGER REEF:** ➤9a-1p & 6-9p Kuloko Arts of Hawaii: Guest Artist (info. 922-5110)  
➤6-9p Kani Ka Pila Grille: Cyril Pahinui (info. 924-4990)
- OUTRIGGER WAIKIKI:** ➤4-6p Duke's: Haumea Warrington / 9:30p-12a Ellsworth Simeona  
➤6p Strolling Hawaiian music by Hemapa`a  
➤7-9p Hula Grill: LIVE LOCAL ENTERTAINMENT (info. 923-4852)
- WAIKIKI BEACH WALK:** ➤4-4:45p Entry to Hula at MANA Hawaii (info. 923-2220)

## Thursday, 12/16

- HOLIDAY INN WAIKIKI BEACHCOMBER RESORT:** ➤9p Jimmy Buffett's: Kailua Bay Buddies (info. 791-1200)
- OUTRIGGER REEF:** ➤9a-1p & 6-9p Kuloko Arts of Hawaii: Guest Artist (info. 922-5110)  
➤6-9p Kani Ka Pila Grille: Kawika Kahiapo & Del Beazley (info. 924-4990)
- OUTRIGGER WAIKIKI:** ➤4-6p Duke's: Haumea Warrington / 9:30p-12a Lawrence Kidder
- WAIKIKI BEACH WALK:** ➤4-4:45p `Ukulele at MANA Hawaii (Mana Hawaii info. 923-2220)  
➤9p-12a Giovanni Pastrami: Free Karaoke (info. 923-2100)

## Friday, 12/17

- HOLIDAY INN WAIKIKI BEACHCOMBER RESORT:** ➤9:30p Jimmy Buffett's: Piranha Brothers (info. 791-1200)
- OUTRIGGER REEF:** ➤9a-1p & 6-9p Kuloko Arts of Hawaii: Guest Artist (info. 922-5110)  
➤6-9p Kani Ka Pila Grille: Sean Naauao (info. 924-4990)
- OUTRIGGER WAIKIKI:** ➤5p Piano by Jeanette Travias, Lobby  
➤4-6p Duke's: Maunaloa / 9:30p-12a Duke's: Lawrence Kidder (info. 922-2268)  
➤7-9p Hula Grill: LIVE LOCAL ENTERTAINMENT (info. 923-4852)
- WAIKIKI BEACH WALK:** ➤6-10p Wyland Galleries: Meet the Artist, **Wyland** (info. 924-1322)  
➤10-10:45a Hula at MANA Hawaii (info. 923-2220)

## Saturday, 12/18

- HOLIDAY INN WAIKIKI BEACHCOMBER RESORT:** ➤9:30p Jimmy Buffett's: Piranha Brothers (info. 791-1200)
- OUTRIGGER REEF:** ➤9a-1p & 6-9p Kuloko Arts of Hawaii: Guest Artist (info. 922-5110)  
➤6-9p Kani Ka Pila Grille: Manoa Madness (info. 924-4990)
- OUTRIGGER WAIKIKI:** ➤4-6p Duke's: LIVE LOCAL ENTERTAINMENT / 9:30p-12a LIVE LOCAL ENTERTAINMENT (info. 922-2268)  
➤7-9p Hula Grill: LIVE LOCAL ENTERTAINMENT (info. 923-4852)
- WAIKIKI BEACH WALK:** ➤6-7p Holiday Entertainment: KUMU HOKUAULANI NIHIPALI & Halau `Olapakuikala`i & Hawaiian Serenaders, Fountain Stage (info. 931-3591)



Activities are subject to change or cancellation without notice.



## ROYAL HAWAIIAN CENTER ENTERTAINMENT AND EVENTS SCHEDULE DECEMBER 2010

Happy Holidays from Royal Hawaiian Center! To celebrate the season, the Center is hosting special group performances in addition to the free weekly entertainment. All performances take place in the festive atmosphere of The Royal Grove.

### **HIGHLIGHTED EVENTS:**

#### **Special Holiday Performances:**

Friday, December 3 at 11:00 a.m.: Holomua School

Tuesday, December 7 at 4:30 p.m.: Pearl City Elementary School

Thursday, December 16 at 1:00 p.m.: Royal Hawaiian Band

Friday, December 17 at 7:45 p.m.: Way of Salvation Church

Monday, December 20, at 4:30 pm.: Saint John The Baptist Catholic School Choir

#### **Pauahi Ali'i Commemoration: Thursday, December 16 at Noon**

Honor Hawaiian heritage and royalty at Royal Hawaiian Center's Pauahi Ali'i Commemoration at Helumoa. Celebrate the 179<sup>th</sup> anniversary of the birth of Princess Bernice Pauahi Bishop, daughter of Konia and Pahi, and great-granddaughter of Kamehameha I.

### **FREE WEEKLY EVENTS SCHEDULE:**

#### **Mondays (December 6, 13, 20, 27)**

Hawaiian music and hula by Kawika Trask & Friends in The Royal Grove 6:00 to 7:00 p.m. Kawika, a long-time Hawaiian musician and Kamehameha Schools graduate, along with Gigi Kidder, Dwight Kanae and their dancers, perform a traditional "cha-lang-a-lang" style perfect for hula. Dancers clad in colorful attire, ti leaf skirts and fresh flower lei, employ such instruments as the ipu (gourd drum), pū'ili (split bamboo) and 'ulī'ulī (feathered rattle).

#### **Tuesdays (December 7, 14, 21, 28)**

Kawika Trask & Friends are back with a hana hou (encore) performance of Hawaiian music and hula (See Monday's listing).

#### **Wednesdays (December 1, 8, 15, 22, 29)**

Hawaiian music and hula by Keoahu in The Royal Grove 6:00 to 7:00 p.m. Leilani Vakauta leads this family ensemble, also known in the music community as "The Soundettes."

-more-

**Thursdays (December 2, 9, 16, 23, 30)**

Hawaiian music and hula by Pu'uhonua in The Royal Grove 6:00 to 7:00 p.m. Ensemble leader, Puake'ala Mann, also teaches hula and 'ukulele at the Center. This group is associated with Hālau Hula o Maiki, the hula school established by the late Kumu Hula (hula master) Maiki Aiu Lake.

**Fridays (December 3, 10, 17, 24, 31)**

Hawaiian music and hula by Ku'uipo Kumukahi in The Royal Grove 6:00 to 7:00 p.m. Ku'uipo is a multi-award winning Hawaiian musician, recording artist and composer. She is currently the president of the Hawai'i Academy of Recording Arts and is also associated with the Hawaiian Music Hall of Fame. The Royal Grove comes alive in her festive Aloha Friday performances.

**Saturdays (December 4, 11, 18)**

Enjoy traditional hula kahiko performances by Hālau Mōhala 'Ilima led by Kumu Hula Mapuana de Silva in The Royal Grove from 6:00 to 6:30 p.m.

Royal Hawaiian Center has the largest garage in the heart of Waikīkī with 10 levels of parking and more than 600 stalls located adjacent to the Sheraton Waikiki Hotel. The Center's free parking promotion offers a variety of options.

Holiday parking rates include 3 hours of free parking with any restaurant validation, 2 hours free parking with any food court validation, or 1 hour free parking with \$1 per hour thereafter for a maximum of 4 hours for \$3 for any retail validation. No minimum purchase is required for validation. Validations cannot be combined.

Royal Hawaiian Center, the premier shopping and entertainment destination in Waikīkī, consists of more than 310,000 square feet along a three-block stretch of Waikīkī's famed Kalākaua Avenue. The Center has more than 100 shops and restaurants to excite every taste. Complimentary music, hula and culture classes are available in The Royal Grove. It is open daily from 10 a.m. to 10 p.m. and beyond with late-night rendezvous hot spots. The Center is situated on more than six acres of prime real estate in Waikīkī and is owned by Kamehameha Schools. To learn more about the Center, visit [www.RoyalHawaiianCenter.com](http://www.RoyalHawaiianCenter.com).

###

**Contacts:**

Manu Boyd (808) 931-3111  
Royal Hawaiian Center  
[m.boyd@festivalcos.com](mailto:m.boyd@festivalcos.com)

Dara Lum (808) 539-3491  
McNeil Wilson Communications  
[dara.lum@mwc-anthology.com](mailto:dara.lum@mwc-anthology.com)

**'ŌLELO OLA O KA 'ĀINA**  
**LIVING LANGUAGE OF THE LAND**

*Lānui Hanu'oli*

Happy Holidays!



**nani maoli** = truly beautiful  
**'ohana** = family  
**walea** = enjoy  
**uluwehiwehi** = festive  
**kau** = season  
**mele** = song  
**Kalikimaka** = Christmas  
**waenakonu** = center, middle  
**'ipuka komo** = entry way  
**ulu niu** = coconut grove

**Nani maoli nō nā lānui ma Helumoa i ke kipa nui 'ana mai 'o nā 'ohana e walea i ka uluwehiwehi o ke kau. Ua hīmeni mai Nā Keiki O Mānana i nā mele ho'ohau'oli o ka wā Kalikimaka, a ua ho'okū 'ia ke kumu Kalikimaka nui i waenakonu o ka 'ipuka komo o ka ulu niu.**

*Royal Hawaiian Center is truly beautiful during the holidays attracting many families to come and enjoy the festivities of the season. Nā Keiki O Manana (from Manana Elementary in Pearl City) performed holiday favorites, and our giant Christmas tree was set up at the entryway to The Royal Grove welcoming one and all to shop, dine and have fun!*

*'Ōlelo Ola o ka 'Āina is produced by Royal Hawaiian Center for the Waikīkī Improvement Association's Wikiwiki Wire e-newsletter.*





## Honolulu Marathon - heads up on street closures



The 38<sup>th</sup> Honolulu Marathon is scheduled for Sunday, December 12. The start of the marathon is at Ala Moana Boulevard and Queen Street. The Wheelchair entrants will start at 4:55 am followed by the runner entrants at 5 am.

The route in Waikiki begins on Ala Moana Boulevard at Holomoana (Hawai'i Prince Hotel) to Kalākaua Avenue. The route continues right on Kalākaua Avenue and heads east to Monsarrat Avenue, right on Pākī Avenue to Diamond Head Road and heads towards East Honolulu.

Total road shutdown in Waikiki (Ala Moana Boulevard at Holomoana to Kalākaua Avenue, east on Kalākaua Avenue to Paokalani Avenue, is 4:30 am. Roads will progressively open at approx. 8:30 am in these areas.

From Kalākaua Avenue and Kapahulu Avenue, Monsarrat Avenue, right on Pākī Avenue and heading towards East Honolulu, total road shutdown will be at 4:30 am. The finish line and marathon events will be at Kapi'olani Park. Kapi'olani Park and these surrounding streets will also be shut down a 4:30 am and will not open until 4:30 pm.

- Through traffic on Kalākaua Avenue will be stopped at 3:30 a.m. and redirected to Kūhiō Avenue to get through Waikiki. Vehicles needing to get to properties on the makai side of Kalākaua will be able to turn down a side street and cross Kalakaua up to 4:30 a.m.
- Tour buses with special placards will be allowed to drive along Kalākaua Avenue until 4:30 a.m.

During the road and park closures, vehicular traffic will not be allowed. Pedestrians may cross at the direction of an HPD officer.

Please notify all guests, businesses, patrons and employees affected by the road and park closures.

Some bus routes will be canceled and/or detoured. Bus riders may call [TheBUS](#) at 848-5555 or visit the [Oahu Transit Services](#) website for details.

For Marathon-related traffic information: Prior to December 8 please call the Marathon Office at 734-7200 or fax: 732-7057. Race Week Only: Wednesday, December 8, thru Saturday, December 11, call the Honolulu Marathon Office at 792-6630, from 9 AM to 5 PM only. FOR RACE DAY TRAFFIC-ONLY QUESTIONS CALL 792-6630.

### Inside this issue:

Sheraton Princess Kaiulani presents an exhibition of edible artistry for the holidays	2	Outrigger Reef's Kani Ka Pila Grille joins ManoaDNA in group's Second Annual Toy Drive	5
Sunday Showcase at Waikiki Beach Walk® - Entertainment Line-up for December	3	Hilton Hawaiian Village announces New Year's Eve Performers	6
Aqua Hotels introduces "Don't touch my package" package	4	"Christmas Around the World" - WCC luncheon at the Hale Koa Hotel!	7
Beginning Japanese II continues at WCC until December 16, 2010	4	Merry Christmas Trolley Ride	7



## Sheraton Princess Kaiulani presents an extraordinary exhibition of edible artistry for the holidays

The Sheraton Princess Ka‘iulani will feature an edible winter wonderland made of gingerbread and other sweet treats created by Executive Chef Ralf Bauer and his team of culinary architects. Visitors and kama‘aina are invited to look at the annual Santa’s German Gingerbread Village starting on November 24 to January 3 in the resort’s lobby.

Chef Bauer, Executive Sous Chef John Hightower, Pantry Chef Amie Tungpalan and the Engineering Department will spend over 660 hours designing and constructing. The Gingerbread Village, which will stand over 14.5 feet high and 24 feet wide, will be constructed with 200 gallons of icing, 100 pounds of dark chocolate, 30 pounds of white chocolate, and 60 sheets of gingerbread.

Imitating the holiday spirit of quaint mountainside villages of his native country Germany, Bauer’s creation will include medieval churches, bell towers, train stations, a carousel and a skating rink.

Chef Bauer adds a touch of old Hawaii by recreating history with iconic structures including the Kawaiha‘o mission church and Moana Surfrider, A Westin Resort & Spa. Joining the historical cluster of gingerbread creations as a new addition, will be the magnificent Iolani Palace which took over six weeks to build and includes all 88 columns.

“Our gingerbread wonderland is appropriate for all ages to enjoy a winter fantasy here on the tropical Island of Oahu,” said Chef Bauer. “Each year I look forward to seeing the children’s excitement as they discover every little detail of the village with their families.”

Sheraton Princess Kaiulani won “Orbitz Best Decked Out Holiday Hotel” in 2009 for providing a feeling of holiday cheer to visitors traveling during the holiday season with Santa’s Gingerbread Village.

For more information, please call Sheraton Princess Ka‘iulani at 808-922-5811 or visit [www.princess-kauilani.com](http://www.princess-kauilani.com).



---

## Sunday Showcase at Waikiki Beach Walk® *Entertainment Line-up for December*

In the spirit of giving during the holiday season, Outrigger Enterprises Group proudly presents the following joyful performers to brighten everyone's holiday. Waikiki Beach Walk® Plaza Stage is the place to be for free weekly concert every Sunday afternoon from 5:00pm - 6:00pm (weather permitting). The entertainment roster for this month includes performances by Halau Hula 'O Kailua YMCA, Akala Dance Studio, Ikona and a special pre-Christmas concert by the ever-popular Honolulu Boy Choir.

Valet parking for up to four hours is available for \$6.00 at the Embassy Suites-Waikiki Beach Walk (201 Beachwalk) and the Wyndham Vacation Ownership-Waikiki Beach Walk (227 Lewers Street), with any same-day purchase from any Waikiki Beach Walk merchant. For more information, contact the Waikiki Beach Walk's management office at (808) 931-3591.

### December 5 - Halau Hula 'O Kailua YMCA

Inspired by the hula styles of the late Aunty Bella Richard of Kailua, this talented Hula Halau will grace the stage at Waikiki Beach Walk for a crowd pleasing performance. Located in Kaneohe, Halau Hula O Kailua YMCA is under the direction of Kumu Hula Haili Kuraoka.

### December 12 - 'Akala Dance Studio (see photo)

Under the direction of Kumu Sanoë, 'Akala Dance Studio is scheduled to make their first appearance at the Waikiki Beach Walk's Sunday Showcase. 'Akala Dance Studio is a non-competitive school offering both the ancient (Kahiko) and modern ('auana) styles of Hula and Tahitian dance.

### December 19 - Honolulu Boy Choir

The harmonic symphony of the Honolulu Boy Choir returns to Waikiki Beach Walk for an encore pre-Christmas concert. Roy and Nyle Hallman founded the Honolulu Boy Choir in 1974.

The group is made up of boys' ages 7-13, representing all the ethnic and socio-economic backgrounds that make up Hawaii's distinctive rainbow of cultures. Seventy-five boys from over 45 public and private schools throughout the island of Oahu make up the Choir, which actually consists of three groups -- the Beginning Choir, the Performing Choir and the Select Choir, each characterized by vocal quality and range.

The Honolulu Boy Choir is a tuition-free musical performance education program for boys that embraces cultural diversity and allows young boys who have had no prior singing experience to join the choir and have the opportunity to perform all over the world.

### December 26 - Ikona

The talented trio of Bernard Kalua (guitarist/vocalist), Ryan Tang (base) and Alika K. (guitar) better known as Ikona, returns to the Plaza Stage for a hana hou performance to serenade Waikiki and to share their love of Hawaiian music.

Don't miss this exciting final performance of the year at the Waikiki Beach Walk's Plaza Stage.



## Aqua Hotels introduces “Don't touch my package” package

Aqua Hotels & Resorts announced they are launching a ‘Don’t touch my package’ package for travelers who may be stressed out and in need of a few days of total relaxation time this holiday season.

“With the recently enhanced security measures, it seems travelers have yet one more thing to be stressed out about when flying so we’ve come up with a special that will help ease the tension once they’re here,” said Elizabeth Churchill, Aqua’s VP Sales & Marketing. “Our ‘Don’t touch my package’ package includes multiple spa treatments including a treatment for arrival day to immediately de-stress and another treatment on the day before departure to prepare for the next airport security encounter.”



Aqua’s ‘Don’t touch my package’ package includes a choice of two, 50-minute massage therapies for every package booked. It’s perfect for couples or individuals who are looking to relax and be pampered when spending the holidays in Waikiki.

The package is available at Aqua’s Boutique hotels through February 28, 2011. A three-night minimum stay is required. Sample package rates in Waikiki during early December start at \$136 per night.

For reservations, see your preferred travel agent, book online or call Aqua at 808-924-6543.

## Beginning Japanese II continued until December 16, 2010

Every Thursday, 1:30-2:30 p.m., 206E, \$2/\$4 at Waikīkī Community Center.

These classes provide an easy introduction to the Japanese Language and are taught by Emily Nitta, an experienced Japanese instructor. Emily continues to teach this session through December 16, 2010. She invites you to come and see how fun and interesting learning Japanese can be.

Look for a new class to start in January.

Fee: Members: \$2.00/ Non-Members \$4.00 per class.

## Hawaiian Diacritical Marks

Waikīkī Improvement Association recognizes the use of diacritical marks (i.e., glottal stop (‘), macron (ā) in place names of Hawai‘i, such as Waikīkī and Kalākaua Avenue and will include them whenever possible. We also respect the individual use (or not) of these markings for names of organizations and businesses.

There will also be times when we may not have a chance to add or change the markings in all of the articles submitted and when that happens, e kala mai.

---

## Outrigger Reef's Kani Ka Pila Grille joins ManoaDNA in group's Second Annual Toy Drive

*100% of the toys will go to Toys for Tots and the Lokahi Tree to be given to Hawai'i families this Holiday Season*

For the second year in a row, island music group ManoaDNA will be hosting a toy drive benefiting Hawaii's families. Joining the effort this year is Kani Ka Pila Grille at the Outrigger Reef on the Beach, where ManoaDNA performs weekly each Saturday evening.

On December 11<sup>th</sup>, members of the U.S. Marines, ManoaDNA, and volunteers will be on-hand from 3 to 9 p.m. at the Outrigger Reef's Kani Ka Pila Grille to collect toys that will be distributed to two Hawaii charities helping Hawaii families this holiday season. Toys should be unwrapped, new or unused, with 100% of the donations going to both Toys for Tots and the Lokahi Tree.

According to ManoaDNA's Alex Kawakami, "The Kani Ka Pila Grille is a perfect location for this event because people can come down, drop off their donation, and enjoy great food, drink, and entertainment."

Kawakami also said they hope to surpass last year's donations with this year's drive. "Last year we donated a dozen trash bags full of toys. This year, with a lot more planning and new partners like the folks at Kani Ka Pila Grille and the Outrigger Reef, we hope to get twice that amount and really help Hawaii's families this holiday season."



"We're so pleased to be a part of ManoaDNA's efforts to help make the holidays brighter for some of our island keiki whose families find themselves in need," said Luana Maitland, Kani Ka Pila Grille's hostess and ambassador of aloha. "Our island community is so generous; I have no doubt we'll have a tremendous outpouring of giving from our local residents. I also expect those visitors who are at Kani Ka Pila Grill that evening will drop a few dollars in the basket once they learn what's happening."

People dropping off toys between 3:00 and 4:00 p.m. on December 11<sup>th</sup> will enjoy the talents of the keiki of Halau Hula o Maiki who will perform in the front lobby of the Outrigger Reef. ManoaDNA will take the Kani Ka Pila stage from 6:00 to 9:00 p.m for a spirited evening of holiday cheer and entertainment.

The Kani Ka Pila Grille also has gotten into the generous spirit. The restaurant's happy hour menu and prices normally available from 3:00 to 6:00 p.m. only will be extended throughout the evening to those patrons who bring in a toy on December 11<sup>th</sup>.

If people can't make it to Kani Ka Pila Grille for the toy drive but would still like to donate, ManoaDNA has setup alternate ways for people to help. First, donations can be dropped off at the group's main drop-off site - the IOLANI on Kona Street retail store. Located at 1234 Kona Street, second floor above Side Street Inn, IOLANI on Kona Street will be happy to collect any toy donations before December 11<sup>th</sup>.

Second, donations can be purchased on-line and sent directly to ManoaDNA. The group has set up an Amazon.com Wish List containing a list of toys for donation. Anyone can log onto the wish list, purchase their donation, and Amazon.com will ship it directly to ManoaDNA! Plus, if they spend \$25 or more, shipping is free! Just be sure to have all donations arrive before December 10<sup>th</sup>. For complete details about online donations, visit [www.ManoaDNA.com](http://www.ManoaDNA.com).

Toy donations only and any donation must be unwrapped and new or unused. ManoaDNA will be posting updates throughout the evening of December 11<sup>th</sup> on their twitter feed ([www.twitter.com/manoadna](http://www.twitter.com/manoadna)).

---

## Hilton Hawaiian Village Announces New Year's Eve Performers

*Tickets go on sale December 10*

Internationally acclaimed impressionist André-Philippe Gagnon, and the most successful recording duo from Hawaii, Cecilio and Kapono, will close out 2010 at the Hilton Hawaiian Village on New Year's Eve. Doors to the Coral Ballroom will open at 9 p.m.; Gagnon will take the stage at 9:15 for an hour, followed by Cecilio & Kapono from 10:30 p.m. through the start of 2011.

Gagnon hails from Quebec, Canada, and has been doing a variety of entertainer impressions since the 1980s. He started out at Montreal's prestigious *Just for Laughs* Festival with an incredible act, impersonating with accuracy every artist from the hit song, "We are the World." Thanks to the success of the *Just for Laughs* performance, Gagnon was invited to present his version of "We are the World" on *The Tonight Show* with Johnny Carson, marking his introduction to American audiences. Since then, he has performed all around the world with tours in Europe and shows in Las Vegas. Most recently, he launched a tour through Canada earlier this year.



Cecilio & Kapono are considered Hawaii's most successful singing duo. Individually, Cecilio Rodriguez and Henry Kapono perform at the Hilton Hawaiian Village weekly. Rodriguez plays at the Tropics Bar & Grill on Thursdays and Fridays, while Kapono stars in "The Wild Hawaiian Experience" at the resort's Super Pool each Saturday evening. In the 1970s, Cecilio & Kapono recorded three albums with Columbia Records: *Cecilio & Kapono*, *Elua* and *The Nightmusic*, all of which became top-selling albums. Their third album alone garnered five of the prestigious Na Hoku Hanohano Awards. Since then, they have done special performances together at the Hilton Hawaiian Village, including a pair of Labor Day concerts Labor Day weekend. New Year's Eve brings their harmonious voices together once again at the resort.



The cost of the New Year's Eve concert is \$100 for premier seating and \$75 for general seating. The price includes a half bottle of champagne and party favors. Tickets go on sale Friday, December 10 in the hotel's main lobby.

For further information, call the Hilton Hawaiian Village at 949-4321.

## “Christmas Around the World” WCC luncheon at the fabulous Hale Koa Hotel!

Wed., December 15, 11:30AM-1:30 PM  
Food, Fun, Prizes, Games and Music!

Our plans have been finalized and here's the news! This year's theme for our luncheon is “*Christmas Around the World*”. The setting is the fabulous Hale Koa Hotel! We have great things in store for you so sign up early! Our holiday menu includes: Hale Koa Salad with Tarragon Dressing, a choice of Chicken Marsala or Cilantro Ginger Marinated Tofu with accompanying vegetables, an Assortment of Rolls, and for dessert...Dutch Apple Pie and Vanilla Ice Cream with a choice of Tea or Coffee.

Check the posted menus around WCC for more details. Full payment is required when registering for the event. The Hale Koa Hotel is located at 2055 Kalia Road with parking available across the street (\$3.00). A parking shuttle will deliver you to the front entrance. There is a bus stop in front of the hotel and buses

Members: \$27.00 Non-Members & Guests: \$30.00  
Payment is due upon registration. Deadline for registration: Monday, Dec.13th by 12 noon.

Call (808) 923-1802 with credit card to reserve your seats today.

## Merry Christmas Trolley Ride

Monday, December 13, 2010, 6:30-8:30 p.m.  
Back by popular demand!

Put on your island style muffler, gather your friends and neighbors and let's journey through Chinatown to Honolulu City Hall to see the special lights and decorations of Christmas!

Trolley departs WCC at 6:30 p.m. and will return by 8:30 p.m. Seats 28 comfortably. Members \$10 and non members/guests \$15. Deadline to register for this popular trolley ride is Monday, December 6.

Bring a sweater or jacket.

Please call (808) 923-1802 to confirm your seat with a credit card or more information.

Hurry! Tickets sell out quickly, don't be disappointed!



## Waikīkī Hula Show at the Kūhiō Beach Hula Mound

Authentic Hawaiian music and hula shows by Hawai'i's finest hula *hālau hula* (dance troupes) and Hawaiian performers. Opens with traditional blowing of conch shell.

**Tues-Thurs-Sat-Sun**, weather-permitting from **6-7 p.m.** at the Kūhiō Beach Hula Mound, near Duke Kahanamoku statue, beachside at Uluniu & Kalākaua Ave. in Waikīkī.

FREE and open to the public. Outdoors, casual, seating on the grass; beach chairs, mats, etc. okay. Cameras welcome. Presented by the City & County of Honolulu, the Hawai'i Tourism Authority and Waikīkī Improvement Association.

For information, call Marnie Weeks, Producer, Kūhiō Beach Hula Shows, 843-8002.

### Week-nights

Every Tuesday – Ainsley Halemanu and Hula Hālau Ka Liko O Ka Palai

Every Thursday – Joan "Aunty Pudgie" Young and Puamelia

### Weekends

Sat Dec 4 – Kapi'olani Ha'o and Halau Ke Kia'i A O Hula

Sun Dec 5 – Leimomi Ho and Keali'i'ika'apunihonua Ke'ena A'o Hula



## Street activity in / near Waikīkī (courtesy of the City)

December 5, 2010 Sunday  
7:00AM Starts  
9:00AM Ends

SAMS MEMORIAL 5K RUN sponsored by sponsored by RRCA/Mid Pacific Roadrunners Club. They expect to have 200 runners. It will start on Monsarrat Ave. near Waikiki Shell, to Paki Ave., to Kalakaua Ave., to Monsarrat Ave., to Paki Ave., to Kalakaua Ave., end at Honolulu Marathon finish/Kapiolani Bandstand.

Contact: John Simonds 373-3609, Email: [simonds001@hawaii.rr.com](mailto:simonds001@hawaii.rr.com)

For more info, visit their website: <http://www.mprrc.com/>

December 5, 2010 Sunday  
10:30AM Starts  
12:30PM Ends

STREET BIKERS UNITED-TOYS FOR TOTS CARAVAN sponsored by Street Bikers United Hawaii. The event is expected to have 4,000 motorcycles. It will start at Magic Island, to Ala Moana Blvd., to Kalakaua Ave., to

Contact: Ray Pagan 282-6419 E-mail: [onerican@hawaii.rr.com](mailto:onerican@hawaii.rr.com)

December 12, 2010 Sunday  
5:00AM Starts  
1:00PM Ends

HONOLULU MARATHON sponsored by Honolulu Marathon Association. They expect to have 35,000+ runners. It will start on Ala Moana Blvd., near Queen St., to Ala Moana Blvd., ewa bound, to Nuuanu Ave., to King St., to Kapiolani Blvd., to Piikoi St., to Ala Moana Blvd., to Kalakaua Ave., to Monsarrat Ave., to Paki Ave., to Diamond Hd. Rd., to 18th Ave., to Kilauea Ave., to Waiialae Ave., to Kalanianaʻole Hwy., to Hawaii Kai Dr., to Keahole St. to Kalanianaʻole Hwy., to Kealaolu Ave., to Kahala Ave., to Diamond Head Rd., to Kalakaua Ave., end at Honolulu Marathon finish/Kapiolani Bandstand. Roadways closed: 1)H1 Freeway closed at Waiialae Ave. off ramp to Aina Koa Ave., 2)Kalanianaʻole Hwy., makai half closed for runners, between Aina Koa Ave. & Kawaihae St., mauka half converted to contra flow, 3)Kalanianaʻole Hwy., all lanes closed, between Kawaihao St. to Keahole St.,

Contact: Honolulu Marathon Assn. 734-7200 Fax: 732-7057

For more info, visit their website: <http://www.honolulumarathon.org/>



### Waikiki Improvement

2255 Kuhio Avenue, Suite 760  
Honolulu, HI 96815

Phone: 808-923-1094, Fax: 808-923-2622

Waikiki Wiki Wiki Wire is published weekly by Sandi Yara Communications for WIA. If you would like to share your news with other members, please send your info to: [editor@waikikiimprovement.com](mailto:editor@waikikiimprovement.com).

Check out our website at:

[www.waikikiimprovement.com](http://www.waikikiimprovement.com)

**'ŌLELO OLA O KA 'ĀINA**  
**LIVING LANGUAGE OF THE LAND**

*Lānui Hanu'oli*

Happy Holidays!



- nani maoli** = truly beautiful
- 'ohana** = family
- walea** = enjoy
- uluwehiwehi** = festive
- kau** = season
- mele** = song
- Kalikimaka** = Christmas
- waenakonu** = center, middle
- 'ipuka komo** = entry way
- ulu niu** = coconut grove

**Nani maoli nō nā lānui ma Helumoa i ke kipa nui 'ana mai 'o nā 'ohana e walea i ka uluwehiwehi o ke kau. Ua hīmeni mai Nā Keiki O Mānana i nā mele ho'ohau'oli o ka wā Kalikimaka, a ua ho'okū 'ia ke kumu Kalikimaka nui i waenakonu o ka 'ipuka komo o ka ulu niu.**

*Royal Hawaiian Center is truly beautiful during the holidays attracting many families to come and enjoy the festivities of the season. Nā Keiki O Manana (from Manana Elementary in Pearl City) performed holiday favorites, and our giant Christmas tree was set up at the entryway to The Royal Grove welcoming one and all to shop, dine and have fun!*

*'Ōlelo Ola o ka 'Āina is produced by Royal Hawaiian Center for the Waikīkī Improvement Association's Wikiwiki Wire e-newsletter.*





# Schedule of Events

December 5-11, 2010



## Sunday, 12/5

- OUTRIGGER REEF:** ➤9a-1p & 6-9p Kuloko Arts of Hawaii: Guest Artist (info. 922-5110)  
➤6-9p Kani Ka Pila Grill: Del Beazley (info. 924-4990)
- OUTRIGGER WAIKIKI:** ➤4-6p Duke's: HENRY KAPONO / 9:30p-12a Lawrence Kidder (info. 922-2268)  
➤7-9p Hula Grill: Bruce Spencer & Sonny Kalua with Jaime (info. 923-4852)
- WAIKIKI BEACH WALK:** ➤5-6p Halau Hula 'O Kailua YMCA, Fountain Stage (info. 931-3591)  
➤6-6:45p Hula Implements work shop at MANA HI (info. 923-2220)

## Monday, 12/6

- HOLIDAY INN WAIKIKI BEACHCOMBER RESORT:** ➤10a-5p Jimmy Buffett's: Free Surfing Museum Tours (info. 791-1200)
- OUTRIGGER REEF:** ➤9a-1p & 6-9p Kuloko Arts of Hawaii: Guest Artist (info. 922-5110)  
➤6-9p Kani Ka Pila Grille: Sean Naauao (info. 924-4990)
- OUTRIGGER WAIKIKI:** ➤4-6p Duke's: Haumea Warrington / 9:30p-12a Ellsworth Simeona (info. 922-2268)
- WAIKIKI BEACH WALK:** ➤4-4:45p The Art of Lei Making at MANA Hawaii (info. 923-2220)

## Tuesday, 12/7

- HOLIDAY INN WAIKIKI BEACHCOMBER RESORT:** ➤10a-5p Free Surfing Museum Tours  
➤8:30p Jimmy Buffett's: Kailua Bay Buddies (info. 791-1200)
- OUTRIGGER REEF:** ➤9a-1p & 6-9p Kuloko Arts of Hawaii: Guest Artist (info. 922-5110)  
➤6-9p Kani Ka Pila Grille: Waipuna (info. 924-4990)
- OUTRIGGER WAIKIKI:** ➤4-6p Duke's: Haumea Warrington / 9:30p-12a Ellsworth Simeona (info. 922-2268)  
➤7-9p Hula Grill: LIVE LOCAL ENTERTAINMENT (info. 923-4852)
- WAIKIKI BEACH WALK:** ➤10-10:30a Learn Hawaiian Language at MANA Hawaii (info. 923-2220)  
➤4:30-6p Ku Ha'aeo-Evening Hula, Fountain Stage (info. 931-3591)

## Wednesday, 12/8

- HOLIDAY INN WAIKIKI BEACHCOMBER RESORT:** ➤8:30p Jimmy Buffett's: Kailua Bay Buddies (info. 791-1200)
- OUTRIGGER REEF:** ➤9a-1p & 6-9p Kuloko Arts of Hawaii: Guest Artist (info. 922-5110)  
➤6-9p Kani Ka Pila Grille: Cyril Pahinui (info. 924-4990)
- OUTRIGGER WAIKIKI:** ➤4-6p Duke's: Haumea Warrington / 9:30p-12a Ellsworth Simeona  
➤6p Strolling Hawaiian music by Hemapa'a  
➤7-9p Hula Grill: LIVE LOCAL ENTERTAINMENT (info. 923-4852)
- WAIKIKI BEACH WALK:** ➤4-4:45p Entry to Hula at MANA Hawaii (info. 923-2220)

## Thursday, 12/9

- HOLIDAY INN WAIKIKI BEACHCOMBER RESORT:** ➤9p Jimmy Buffett's: Kailua Bay Buddies (info. 791-1200)
- OUTRIGGER REEF:** ➤9a-1p & 6-9p Kuloko Arts of Hawaii: Guest Artist (info. 922-5110)  
➤6-9p Kani Ka Pila Grille: Kawika Kahiapo & Martin Pahinui (info. 924-4990)
- OUTRIGGER WAIKIKI:** ➤4-6p Duke's: Haumea Warrington / 9:30p-12a Lawrence Kidder
- WAIKIKI BEACH WALK:** ➤4-4:45p `Ukulele at MANA Hawaii (info. 923-2220)  
➤9p-12a Giovanni Pastrami: Free Karaoke (info. 923-2100)

## Friday, 12/10

- HOLIDAY INN WAIKIKI BEACHCOMBER RESORT:** ➤9:30p Jimmy Buffett's: Piranha Brothers (info. 791-1200)
- OUTRIGGER REEF:** ➤9a-1p & 6-9p Kuloko Arts of Hawaii: Guest Artist (info. 922-5110)  
➤6-9p Kani Ka Pila Grille: Kaukahi (info. 924-4990)
- OUTRIGGER WAIKIKI:** ➤5p Piano by Jeanette Travias, Lobby  
➤4-6p Duke's: Maunaloa / 9:30p-12a Duke's: Lawrence Kidder (info. 922-2268)  
➤7-9p Hula Grill: LIVE LOCAL ENTERTAINMENT (info. 923-4852)
- WAIKIKI BEACH WALK:** ➤10-10:45a Hula at MANA Hawaii (info. 923-2220)

## Saturday, 12/11

- HOLIDAY INN WAIKIKI BEACHCOMBER RESORT:** ➤9:30p Jimmy Buffett's: Piranha Brothers (info. 791-1200)
- OUTRIGGER REEF:** ➤9a-1p & 6-9p Kuloko Arts of Hawaii: Guest Artist (info. 922-5110)  
➤6-9p Kani Ka Pila Grille: Manoa DNA (info. 924-4990)
- OUTRIGGER WAIKIKI:** ➤4-6p Duke's: LIVE LOCAL ENTERTAINMENT / 9:30p-12a LIVE LOCAL ENTERTAINMENT (info. 922-2268)  
➤7-9p Hula Grill: LIVE LOCAL ENTERTAINMENT (info. 923-4852)



Activities are subject to change or cancellation without notice.



## International Waikiki Hula Conference 2010

*Over 750 participate in the 4th annual event*

The 2010 International Waikiki Hula Conference created excitement all over Waikiki. With over 750 participants a highpoint for the fourth annual event was when the Hawai'i Convention Center buzzed with excitement and aloha as participants from over a dozen countries danced, learned and watched hula presented by more than 40 of our most noted kumu hula.

Revered Kumu Hula Joan Lindsey describes the atmosphere:

*We had about 63 dancers (not counting the translator, video person etc.) in each session. Several were returnees from last year. All enjoyed the conference, they workshops they attended and everyone walked away very happy.*



Continued on next page

### Inside this issue:

Starwood Hawaii partners with Convention Television (CTV) to provide new services	4	Hilton Hawaiian Village hosts live broadcast of "Sunrise Australia"	7
"Prince Winter Escape" Special	4	Outrigger's holiday activities include a Very Important Guest	8-9
Hyatt Regency Waikiki Holiday Recipe Contest	5	Duke's Waikiki bids Aloha to 2010 with live music featuring Henry Kaponu	10
Find Hawaiian home decor options at Royal Hawaiian Center	5	Waikiki Hula Show at Kūhiō Beach Hula Mound	11
Dig the looks of local designers at Aloha 'Āina Boutique in Royal Hawaiian Center	6	Attachments: Outrigger Weekly Entertainment Schedule, Wolfgang's \$10 Hamburger	

... and MORE

Continued from front page

*When we did Kapilini, to my surprise, many tears fell. They were crying because the song was so 'beautiful' and the convention 'so very good'. After class, they wanted to take pictures, sign the book or certificates, etc. Let me tell you, like a rock star, there I was snap, snap, sign, sign. I loved it.*

*Auntie Pudgy, Ainsley, Lilinoe and I were on stage. We had a glorious time. The crowd was the biggest ever. The Conference students got their lei as they entered, they danced and were given their certificates. The crowd made it a memorable evening for the dancers. All of them were crying. Some thanked me for the certificate because it was signed and sealed. Little things mean a lot to some.*

IWHC is the only conference of its kind, in that it:

- brings together the widest variety of hula teachers: seasoned elders to new kumu hula, representing differing styles or lineages of hula
- welcomes conferees with all levels of expertise (beginners to kumu hula)
- offers public performance as part of the learning experience
- provides a very comfortable, non-competitive environment
- presents unique seminars on hula-related topics, sometimes controversial, inviting discussion
- is very affordable, with kama`aina and group rates offered

“WIA supports presenting the true host culture in Waikiki, as today’s visitors are seeking a deeper knowledge of Hawaii’s culture and history,” says WIA president Rick Egged, who spearheads the conference production team. The conference has become a great model of ‘cultural tourism.’”

According to conference producer Marnie Weeks, “Our goal is to present an event which will enrich the hula experience of conferees from around the world, as well as from here in Hawaii, in an atmosphere of aloha and with deep respect for the art and culture of hula.”

The conference would not be possible without the support of our generous sponsors particularly our major partners in this event the Hawai’i Convention Center and the City and County of Honolulu as well as:

Aston Hotels & Resorts [www.astonhotels.com](http://www.astonhotels.com)

DFS Hawaii [www.dfsgalleria.com/en/hawaii](http://www.dfsgalleria.com/en/hawaii)

Hilton Hawaiian Village Beach Resort & Spa [www.hiltonhawaiianvillage.com](http://www.hiltonhawaiianvillage.com)

Outrigger Hotels & Resorts [www.outrigger.com](http://www.outrigger.com)

Queen Emma Land Company/The International Marketplace [www.internationalmarketplacewaikiki.com](http://www.internationalmarketplacewaikiki.com)

Royal Hawaiian Center [www.royalhawaiiancenter.com](http://www.royalhawaiiancenter.com)

Royal Star Hawaii Motorcoach Tours & Destination Services <http://www.royalstarhawaii.com/>

This Week Publications/Hagadone Printing Company [www.thisweek.com](http://www.thisweek.com), [www.hagadoneprinting.com](http://www.hagadoneprinting.com)

Toshimaku City Tourist Association Japan

Waikiki Beach Marriott Resort & Spa [www.marriottwaikiki.com](http://www.marriottwaikiki.com)

Mahalo for all their help!





## Starwood Hawaii partners with Convention Television (CTV) to provide new services partnership called Association Ally

Starwood Hotels & Resorts Hawaii has formed a strategic partnership – called Association Ally – with Convention Television (CTV), a CNN-style, dedicated, “narrowcast” television programming service, the premier convention media company of its kind. The Association Ally partnership will provide convention organizers as well as convention-goers with a range of services that enhance the convention experience at Starwood Hotels & Resorts in Waikiki, The Westin Maui Resort & Spa and The Sheraton Keauhou Bay Resort & Spa (on the Big Island of Hawaii).

The new partnership will bring Starwood Hawaii’s association customers – and convention attendees – the following benefits:

- Dedicated in-room business channels to communicate the convention’s daily calendar of events, special association programming, activities, VIP interviews, etc.
- Customized videos to help build excitement for the destination
- Intuitive sponsorship packages designed to help meeting planners secure needed support
- Progressive food and beverage discounts for meals taken at leisure
- Added audio/visual and box-handling considerations
- Optional blocks with Starwood’s Sheraton, Westin and Luxury Collection resorts

“We are always looking for ways to enhance the meeting experience at our properties,” said Keith Vieira, senior vice president of operations for Starwood Hotels & Resorts – Hawaii & French Polynesia. “Our Association Ally partnership with CTV, with its up-to-the-minute technology and best-in-class service, will help drive meeting attendance and increase productivity. The partnership brings content that’s relevant, timely and up-to-date right into meeting-goers’ rooms and suites, allowing them to stay updated 24/7 and giving meeting organizers an ideal channel with which to stay in touch with attendees.”

For additional information, please call Paula Dirks, Director of Sales, Group Market at (808) 931-8800 or <mailto:paula.dirks@starwoodhotels.com>.



### “Prince Winter Escape” special

Hawaii Prince Hotel Waikīkī.

Room rates start at \$229 per night for an Oceanfront Prime room with a \$50 daily resort credit.\*

\* Resort credits may not be applied to room and tax.

The “Prince Winter Escape” offer is valid for stays between January 3 – March 31, 2010 inclusive.

Blackout dates and some restrictions may apply.  
For reservations, bookings and more information call 1-866-PRINCE-6 or visit [www.PrinceResortsHawaii.com/winter](http://www.PrinceResortsHawaii.com/winter).



---

## Hyatt Regency Waikiki Holiday Recipe Contest

*Submit a favorite recipe to win a two-night stay and dinner for two at Hyatt Waikiki*

Hyatt Regency Waikiki Beach Resort and Spa invites the public to enter the new “Hawaii Holiday Treats and Eats” recipe contest available on the Hyatt Regency Waikiki Facebook page from Thursday, November 25, 2010 to Saturday, December 25, 2010. The winning recipe will offer great flavor and use unique ingredients as judged by Executive Chef, Jeff Wind. The winner will receive a two-night stay and dinner for two at Hyatt Regency Waikiki. To enter the contest, Facebook users should “like” Hyatt Regency Waikiki Beach Resort and Spa on Facebook and then post the recipe.

“Everyone has a favorite dish that they look forward to enjoying during the holiday season, and our ‘Hawaii Holiday Treats and Eats’ recipe contest is a fun way to encourage the sharing of holiday food traditions,” remarks Jeff Wind, executive chef of Hyatt Regency Waikiki Beach Resort and Spa.

Executive Chef Wind will select his favorite of the recipes submitted. Participants are also encouraged to post a photo of the ready-to-serve dish.

The winner will be announced on Facebook on December 31, 2010.

For more information, please visit Hyatt Regency Waikiki Beach Resort and Spa on Facebook or call (808) 237-6222.

Information about the resort is available online at [waikiki.hyatt.com](http://waikiki.hyatt.com).



## Find Hawaiian home decor options at Royal Hawaiian Center

Honolulu Home Collection is now open at Royal Hawaiian Center on the second level of Building C, between Ferrari and Apple Store.

Here you can find a variety of home decor products including designer picture frames and crystal accessories, clocks, porcelain cups & saucers, plates and figurines. European dolls and unique Hawaiian quilts are also showcased in this store.

“The Honolulu Home Collection is a locally-owned boutique that offers unique and one-of-a-kind accessories and collectibles for a wide array of home designs,” said Marleen Akau, general manager for Royal Hawaiian Center. “I am very pleased to welcome this new shop that will offer our customers something for everyone, as well as great gift ideas in a wide array of selection, price and style.”

For more information, call the store at 808-626-5111.

The Center is open from 10: a.m. to 10 p.m. daily. For more information about Royal Hawaiian Center’s shopping and dining options, call Lei Ohu Guest Services at (808) 922-2299 or visit the website at [www.RoyalHawaiianCenter.com](http://www.RoyalHawaiianCenter.com).

Royal Hawaiian Center has the largest garage in the heart of Waikiki with 10 levels of parking and more than 600 stalls located adjacent to the Sheraton Waikiki Hotel. The Center’s free parking promotion offers a variety of options. Holiday parking rates include 3 hours of free parking with any restaurant validation, 2 hours free parking with any food court validation, or 1 hour free parking with \$1 per hour thereafter for a maximum of 4 hours for \$3 for any retail validation. No minimum purchase is required for validation. Validations cannot be combined.



## Dig the looks of local designers at Aloha Aina Boutique in Royal Hawaiian Center

Opening soon on November 25, Aloha Aina Boutique will be located on the second level of Building B, next to Island Vintage Coffee.

The store will offer coastal shabby chic decor, products by independent designers, and handmade discoveries made locally in Hawaii. Find jewelry, hats, shells, sarongs, hand-crafted graphic tees from Vers Hawaii, baby dresses by Machine Machine, or the latest contemporary casual styles from Indah clothing.

“Aloha Aina Boutique is a contemporary new boutique created for the fashion customer seeking the latest in local designer apparel and accessories,” said Marleen Akau, general manager for Royal Hawaiian Center. “We are thrilled to offer our Royal Hawaiian Center customers another new exclusive fashion boutique specializing in contemporary casual clothing from a wide array of independent designers.”

Learn more about the store and its latest updates at [Twitter.com/AlohaAinaHI](https://twitter.com/AlohaAinaHI). The Center is open from 10:00 a.m. to 10:00 p.m. daily. For more information about Royal Hawaiian Center’s shopping and dining options, call Lei Ohu Guest Services at (808) 922-2299 or visit [www.RoyalHawaiianCenter.com](http://www.RoyalHawaiianCenter.com).

Royal Hawaiian Center has the largest garage in the heart of Waikiki with 10 levels of parking and more than 600 stalls located adjacent to the Sheraton Waikiki Hotel. The Center’s free parking promotion offers a variety of options.

Holiday parking rates include 3 hours of free parking with any restaurant validation, 2 hours free parking with any food court validation, or 1 hour free parking with \$1 per hour thereafter for a maximum of 4 hours for \$3 for any retail validation. No minimum purchase is required for validation. Validations cannot be combined.

Royal Hawaiian Center, the premier shopping and entertainment destination in Waikiki, consists of more than 310,000 square feet along a three-block stretch of Waikiki’s famed Kalakaua Avenue. The Center has more than 100 shops and restaurants to excite every taste. Complimentary music, hula and culture classes are available in The Royal Grove. It is open daily from 10 a.m. to 10 p.m. and beyond with late-night rendezvous hot spots. The Center is situated on more than six acres of prime real estate in Waikiki and is owned by Kamehameha Schools. To learn more about the Center, visit [www.RoyalHawaiianCenter.com](http://www.RoyalHawaiianCenter.com).



### Hawaiian Diacritical Marks

Waikī Improvement Association recognizes the use of diacritical marks (i.e., glottal stop (ʻ), macron (ā) in place names of Hawaiʻi, such as Waikī and Kalākaua Avenue and will include them whenever possible. We also respect the individual use (or not) of these markings for names of organizations and businesses.

There will also be times when we may not have a chance to add or change the markings in all of the articles submitted and when that happens, e kala mai.

---

## Hilton Hawaiian Village Hosts Live Broadcast of “Sunrise Australia”

“Sunrise,” Australia’s top-rated morning show, wrapped up five days of live broadcasts from the Hilton Hawaiian Village on Thanksgiving. From November 21-25, Channel 7 Australia spent three hours showcasing the best of the islands, including two songs performed live by singer Jack Johnson, accompanied by Paula Fuga, at the resort’s Tropics Bar & Grill. Other segments featured the men of Tiahti Productions, surfers Bethany Hamilton and Stephanie Gilmore, cooking with Chef George Mavrothalassitis and Hilton Hawaiian Village Executive Chef Jeffrey Vigilla, the keiki of Halau Hula o Hokulani, and Australian athletes from the University of Hawaii football and softball teams.

“Sunrise” weather presenter Grant Denyer (in blue) on the first day of the weeklong broadcast that featured the men of Tiahti Productions.



Singers Jack Johnson and Paula Fuga perform live at Tropics Bar & Grill on Tuesday, November 23.





---

## Outrigger's holiday activities include a Very Important Guest

*Santa Claus makes two special appearances this holiday season at the Outrigger Waikiki and Outrigger Reef hotels*

The holiday season's most recognized figure, Santa Claus, makes a return visit to the Outrigger Waikiki on the Beach and Outrigger Reef on the Beach hotels with two popular events that are open to the public.

The jolly elf will spread holiday cheer on the beach at Waikiki when he arrives by outrigger canoe at the Outrigger Waikiki on December 11; and on December 21 and December 22, kids can enjoy breakfast with Santa at the Outrigger Reef's Kani Ka Pila Grille. These events and more are available this holiday season for the general public and hotel guests to enjoy.

Mark you calendars for these public events:

### Tree Lighting Ceremony

December 1 - 5 pm, Outrigger Reef on the Beach

Take part in an island-style tree lighting ceremony in the hotel lobby of the Outrigger Reef on the Beach, followed by festive holiday entertainment by Halau Ka Hale I O Kahala. Free and open to the public.

### Hawaiian Santa Arrives by Canoe

December 11 - Saturday, 9 am, Outrigger Waikiki on the Beach

Welcome the world's most famous elf as he arrives via outrigger canoe on the beach in front of the Outrigger Waikiki hotel. Keiki from Halau `O Pua Kahale will be on hand to greet Santa with a gift of hula. The arrival will be followed by complimentary photo-taking with Santa in the hotel lobby. Free and open to the public.



### Employee Christmas Wreath Display

December 20 - 9 am to 12 noon, Outrigger Reef on the Beach

The employees at the Outrigger Reef on the Beach showcase their festive artistry with creative holiday wreaths. The public is invited to vote for the best in the categories of most Creative, Traditional and Hawaiian. Free and open to the public.

### Employee Gingerbread Display

Week of December 20-24, Outrigger Waikiki on the Beach

View the creative gingerbread works of the Outrigger Waikiki's employees as they show off their creative and culinary skills. The public is invited to enjoy the delightful gingerbread works of art at this annual event. Free and open to the public

### Breakfast with Hawaiian Santa

December 21 & 22 - 8 am to 10 am, Outrigger Reef on the Beach

Get your reservations in early for this special morning with Santa Claus. A buffet breakfast, picture taking, balloon art, and face painting are all part of the morning's activities.

The buffet menu will include scrambled eggs, steamed white rice, country fried potatoes, crispy bacon, Portuguese sausage, assorted pastries, fresh fruits, cereal and a choice of coffee, milk or Juice. \$22.00 per person, inclusive of tax, tip and FREE photo with Santa; \$11.50 children 5 - 11 years; children 4 years and younger eat free. Validated valet parking will be available at \$5 per car. Reservations required: 808-924-4993 .



Continued on next page

---

Continued from previous page

In addition to public events, additional holiday-themed in-house activities have been planned exclusively for hotel guests enjoying the festive season at the Outrigger Reef and Outrigger Waikiki hotels.

**Petroglyph Gift Card Making**

December 1 and 15 – 10 am, Outrigger Reef on the Beach

Guests will enjoy making their own personalized gift cards with ancient Hawaiian petroglyph designs using carved tiles and rubber stamps created by local artist Lynn Cook. All materials provided. Event held in the lobby and open exclusively to hotel guests.

**Christmas Ornament Making**

Every Wednesday from Dec. 8-22 at 10 am, Outrigger Waikiki on the Beach

Guest will enjoy making their own Christmas ornaments and decorations at this fun filled activity. Event held in the lobby and open exclusively to hotel guests.

**Christmas Cookie Decorating and Storytelling**

Every Friday from Dec. 10-24 at 10 am, Outrigger Waikiki on the Beach

Decorate holiday shaped cookies with decorative frostings and sip hot chocolate provided by Seattle's Best. Christmas storytelling to follow by hotel managers. Event held in the lobby and open exclusively to hotel guests.

**Hawaiian Ornament Making**

December 20 – 10 a.m., Outrigger Reef on the Beach

Guests walk away with a great souvenir of their Hawaiian holiday vacation – a unique, personally crafted Hawaiian ornament. All materials provided. Event held in the lobby and open exclusively to hotel guests.

**Hawaiian Ohe Kapala – Visor Stamping**

December 21 & 22, 10 am, Outrigger Reef on the Beach

Practicality and artistry come together when guests design their own visor using *Ohe Kapala* stamps. All materials provided. Event held in the lobby and open exclusively to hotel guests.

**Cookie Decorating Hawaiian Style**

December 23 – 10 am, Outrigger Reef on the Beach

Guests will enjoy decorating their own gingerbread cookies. All materials will be provided. Event held in the lobby and open exclusively to hotel guests.

For more information about any holiday activities at the Outrigger Reef and Outrigger Waikiki hotels, contact the Outrigger Waikiki at 808-921-9731 and Outrigger Reef at 808-924-6007.

There is no resort fee for guests staying at either of Outrigger's beachfront properties in Waikiki. Instead, guests enjoy the Fee Free Escape program which includes such on-property amenities as free high-speed Internet access in guest rooms; free wireless access in the hotel lobby, meeting rooms and pool area; free local and long-distance direct-dial phone calls to the U.S. mainland and Canada; free 24-access to the fitness center; free in-room coffee/tea; and free use of the in-room safe.

Room reservations or general information about the hotels is available at [www.outrigger.com](http://www.outrigger.com) or call toll free 800-OUTRIGGER (1-800-688-7444) within the United States, Guam and Canada.

Outrigger's toll-free number is available internationally via AT&T's Direct 800 Service.

Elsewhere call direct to 303-369-7777 (long distance charges apply).

## Duke's Waikiki bids Aloha to 2010 with live music throughout December featuring Henry Kaponu on Sundays

Duke's Waikiki says aloha to 2010 with live music throughout December, featuring Henry Kaponu on Sundays. Guests are invited to enjoy a Hawaiian style holiday season with free "Concerts on the Beach" from 4 to 6 p.m. Fridays through Sundays. In addition, late night guests can enjoy live music from 9:30 p.m. until midnight Fridays through Sundays. The entertainment line-up for December includes:

"Concerts on the Beach" – 4-6p.m.

Maunalua – Fridays, December 3, 10, 17 & 31  
10 Feet – Saturday, December 4  
Beach Band 5 – Saturdays, December 11 & 18  
Peter Milo Band – Saturday, December 25  
Henry Kaponu – Sundays, December 5, 12, 19 & 26

Late night live music – 9:30p.m. until midnight:

Eric Lee Duo – Saturday, December 4  
Simple Souls – Saturdays, December 11 & 25  
John Helm Duo – Saturday, December 18

Named "Best Place to Take Visitors" by Honolulu Magazine, "Best Place to Go on a Sunday" by Honolulu Weekly readers and "Best Nightlife Venue" in Hawaii by Zagat Survey, Duke's Waikiki pays tribute to famed waterman Duke Kahanamoku and provides an authentic and enjoyable Hawaiian-style dining experience.

Duke's Waikiki is located at 2335 Kalakaua Avenue, beachside in the Outrigger Waikiki on the Beach Hotel. Validated parking is available at Ohana East Hotel. Reservations: (808) 922-2268, website: [www.dukeswaikiki.com](http://www.dukeswaikiki.com) <<http://www.dukeswaikiki.com>> .

### Waikīkī Hula Show at the Kūhiō Beach Hula Mound

Authentic Hawaiian music and hula shows by Hawai'i's finest hula *hālau hula* (dance troupes) and Hawaiian performers. Opens with traditional blowing of conch shell.

**Tues-Thurs-Sat-Sun**, weather-permitting from **6:00-7:00 p.m.** at the Kūhiō Beach Hula Mound, near Duke Kahanamoku statue, beachside at Uluniu & Kalākaua Ave. in Waikīkī.

FREE and open to the public. Outdoors, casual, seating on the grass; beach chairs, mats, etc. okay. Cameras welcome. Presented by the City & County of Honolulu, the Hawai'i Tourism Authority and Waikīkī Improvement Association.

For information, call Marnie Weeks, Producer, Kūhiō Beach Hula Shows, 843-8002.

#### Week-nights

Every Tuesday – Ainsley Halemanu and Hula Hālau Ka Liko O Ka Palai

Every Thursday – Joan "Aunty Pudgie" Young and Puamelia

#### Weekends

Saturday, Nov 27 – Lilinoe Lindsey and Ka Pa Nani O Lilinoe

Sunday, Nov 28 – Kapi'olani Ha'o and Halau Ke Kia'i A O Hula



## Street activity in / near Waikīkī (courtesy of the City)

December 1, 2010 Wednesday to  
January 3, 2011 Monday  
various times,  
7 days a week

ANNUAL CHRISTMAS SEASON PARKING BAN by the City and County of Honolulu. No Parking Tow Away Zones:

Honolulu area - 6 am to 10:30 pm, 1)Kapiolani Boulevard, makai side, South St. to Atkinson Dr.,

December 5, 2010 Sunday  
7:00AM Starts  
9:00AM Ends

SAMS MEMORIAL 5K RUN sponsored by sponsored by RRCA/Mid Pacific Roadrunners Club. They expect to have 200 runners. It will start on Monsarrat Ave. near Waikiki Shell, to Paki Ave., to Kalakaua Ave., to Monsarrat Ave., to Paki Ave., to Kalakaua Ave., end at Honolulu Marathon finish/Kapiolani Bandstand.

Contact: John Simonds 373-3609, Email:[simonds001@hawaii.rr.com](mailto:simonds001@hawaii.rr.com)  
For more info, visit their website: <http://www.mprrc.com/>

Happy Shopping!



### Waikiki Improvement

2255 Kuhio Avenue, Suite 760  
Honolulu, HI 96815

Phone: 808-923-1094, Fax: 808-923-2622

Waikiki Wiki Wiki Wire is published weekly by  
Sandi Yara Communications for WIA.  
If you would like to share your news with other  
members, please send your info to:  
[editor@waikikiimprovement.com](mailto:editor@waikikiimprovement.com).

Check out our website at:

[www.waikikiimprovement.com](http://www.waikikiimprovement.com)

# Schedule of Events

## NOVEMBER 28 - December 4, 2010



### Sunday, 11/28

- OUTRIGGER REEF:** ➤9a-1p & 6-9p Kuloko Arts of Hawaii: Guest Artist (info. 922-5110)  
➤6-9p Kani Ka Pila Grill: Del Beazley (info. 924-4990)
- OUTRIGGER WAIKIKI:** ➤4-6p Duke's: HENRY KAPONO / 9:30p-12a Lawrence Kidder (info. 922-2268)  
➤7-9p Hula Grill: Bruce Spencer & Sonny Kalua with Jaime (info. 923-4852)
- WAIKIKI BEACH WALK:** ➤5-6p **Kamuela Kahoano, Fountain Stage (info. 931-3591)**  
➤6-6:45p Hula Implements work shop at MANA HI (info. 923-2220)

### Monday, 11/29

- HOLIDAY INN WAIKIKI BEACHCOMBER RESORT:** ➤10a-5p Jimmy Buffett's: Free Surfing Museum Tours (info. 791-1200)
- OUTRIGGER REEF:** ➤9a-1p & 6-9p Kuloko Arts of Hawaii: Guest Artist (info. 922-5110)  
➤6-9p Kani Ka Pila Grille: Sean Naauao (info. 924-4990)
- OUTRIGGER WAIKIKI:** ➤4-6p Duke's: Haumea Warrington / 9:30p-12a Ellsworth Simeona (info. 922-2268)
- WAIKIKI BEACH WALK:** ➤4-4:45p The Art of Lei Making at MANA Hawaii (info. 923-2220)

### Tuesday, 11/30

- HOLIDAY INN WAIKIKI BEACHCOMBER RESORT:** ➤10a-5p Free Surfing Museum Tours  
➤8:30p Jimmy Buffett's: Kailua Bay Buddies (info. 791-1200)
- OUTRIGGER REEF:** ➤9a-1p & 6-9p Kuloko Arts of Hawaii: Guest Artist (info. 922-5110)  
➤6-9p Kani Ka Pila Grille: Weldon Kekauoha (info. 924-4990)  
➤6:30p Kani Ka Pila Grille: "Call the Coach show w/ Greg McMackin" (info. 924-4990)
- OUTRIGGER WAIKIKI:** ➤4-6p Duke's: Haumea Warrington / 9:30p-12a Ellsworth Simeona (info. 922-2268)  
➤7-9p Hula Grill: Kamuela Kahoano (info. 923-4852)
- WAIKIKI BEACH WALK:** ➤10-10:30a Learn Hawaiian Language at MANA Hawaii (info. 923-2220)  
➤5-7p **Ku Ha' aheo & JAL Ho' olaule' a, Fountain Stage (info. 931-3591)**

### Wednesday, 12/1

- HOLIDAY INN WAIKIKI BEACHCOMBER RESORT:** ➤8:30p Jimmy Buffett's: Kailua Bay Buddies (info. 791-1200)
- OUTRIGGER REEF:** ➤9a-1p & 6-9p Kuloko Arts of Hawaii: Guest Artist (info. 922-5110)  
➤6-9p Kani Ka Pila Grille: Cyril Pahinui (info. 924-4990)
- OUTRIGGER WAIKIKI:** ➤4-6p Duke's: Haumea Warrington / 9:30p-12a Ellsworth Simeona  
➤6p Strolling Hawaiian music by Hemapa'a  
➤7-9p Hula Grill: LIVE LOCAL ENTERTAINMENT (info. 923-4852)
- WAIKIKI BEACH WALK:** ➤4-4:45p Entry to Hula at MANA Hawaii (info. 923-2220)

### Thursday, 12/2

- HOLIDAY INN WAIKIKI BEACHCOMBER RESORT:** ➤9p Jimmy Buffett's: Kailua Bay Buddies (info. 791-1200)
- OUTRIGGER REEF:** ➤9a-1p & 6-9p Kuloko Arts of Hawaii: Guest Artist (info. 922-5110)  
➤6-9p Kani Ka Pila Grille: Kawika Kahiapo & Martin Pahinui (info. 924-4990)
- OUTRIGGER WAIKIKI:** ➤4-6p Duke's: Haumea Warrington / 9:30p-12a Lawrence Kidder
- WAIKIKI BEACH WALK:** ➤4-4:45p `Ukulele at MANA Hawaii (Mana Hawaii info. 923-2220)  
➤9p-12a Giovanni Pastrami: Free Karaoke (info. 923-2100)

### Friday, 12/3

- HOLIDAY INN WAIKIKI BEACHCOMBER RESORT:** ➤9:30p Jimmy Buffett's: Piranha Brothers (info. 791-1200)
- OUTRIGGER REEF:** ➤9a-1p & 6-9p Kuloko Arts of Hawaii: Guest Artist (info. 922-5110)  
➤6-9p Kani Ka Pila Grille: Eric Lee (info. 924-4990)
- OUTRIGGER WAIKIKI:** ➤5p Piano by Jeanette Travias, Lobby  
➤4-6p Duke's: Maunaloa / 9:30p-12a Duke's: Lawrence Kidder (info. 922-2268)  
➤7-9p Hula Grill: LIVE LOCAL ENTERTAINMENT (info. 923-4852)
- WAIKIKI BEACH WALK:** ➤10-10:45a Hula at MANA Hawaii (info. 923-2220)

### Saturday, 12/4

- HOLIDAY INN WAIKIKI BEACHCOMBER RESORT:** ➤9:30p Jimmy Buffett's: Piranha Brothers (info. 791-1200)
- OUTRIGGER REEF:** ➤9a-1p & 6-9p Kuloko Arts of Hawaii: Guest Artist (info. 922-5110)  
➤6-9p Kani Ka Pila Grille: Manoa DNA (info. 924-4990)
- OUTRIGGER WAIKIKI:** ➤4-6p Duke's: LIVE LOCAL ENTERTAINMENT / 9:30p-12a LIVE LOCAL ENTERTAINMENT (info. 922-2268)  
➤7-9p Hula Grill: LIVE LOCAL ENTERTAINMENT (info. 923-4852)



Activities are subject to change or cancellation without notice.

W  
WOLFGANG'S  
STEAKHOUSE

*Join us for a \$10 Burger!*



**WOLFGANG'S 1/2-LB PRIME SIRLOIN BURGER**

ON A FRESH-BAKED SESAME SEED BUN,

WITH TOMATO, ONIONS, PICKLES & LETTUCE

STEAK FRIES • ONION RINGS

**\$10 DAILY DURING LUNCH, ONLY (11 A.M.~3 P.M.)**

ADD \$1-2 FOR CHEESE

3 HOURS FREE PARKING

RESERVATIONS 922.3600 • [WWW.OPENTABLE.COM](http://WWW.OPENTABLE.COM)

Royal Hawaiian Center, Bldg C, Level 3  
808.922.3600 • [www.wolfgangsteakhouse.net](http://www.wolfgangsteakhouse.net)